

Anti-Human CD161/KLRB1/NK1.1 Antibody (KM12.4.7)

Summary

Catalog No.	FHG33810
Clone ID	KM12.4.7
Host species	Mouse
Conjugation	Unconjugated
Species reactivity	Human
Form	Liquid
Storage buffer	0.01M PBS, pH 7.4.
Concentration	1 mg/ml
Purity	>95% as determined by SDS-PAGE.
Clonality	Monoclonal
Isotype	IgG1, kappa
Applications	FCM
Target	CLEC5B, KLRB1, CD161, HNKRP1a, C-type lectin domain family 5 member B, NKRP1A, Natural killer cell surface protein P1A, Killer cell lectin-like receptor subfamily B member 1, NKR-P1A
Purification	Protein A/G purified from cell culture supernatant.
Endotoxin level	Please contact with the lab for this information.
Accession	Q12918

Stability and Storage

Use a manual defrost freezer and avoid repeated freeze-thaw cycles.

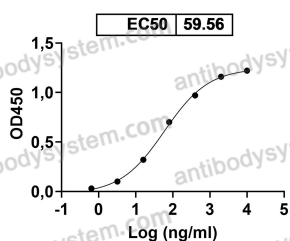
Store at 4°C short term (1-2 weeks). Store at -20°C 12 months. Store at -80°C long term.

Note

For research use only.

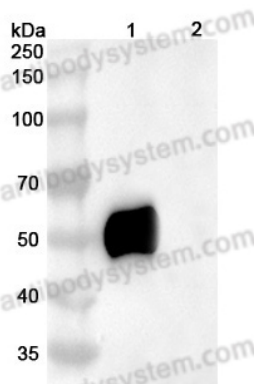
Data Image

Anti-Human CD161/KLRB1/NK1.1 Antibody (KM12.4.7)
binds with Human CD161



Detects Human CD161/KLRB1 in indirect ELISAs.

Bioactivity



Western Blot

Various lysates were subjected to SDS PAGE followed by western blot with CD161 antibody (FHG33810) at 1 µg/ml.

Lane 1: CD161 transfected HEK293 cell lysate

Lane 2: Non-transfected HEK293 cell lysate

Second Ab: Goat Anti-Mouse IgG H&L Polyclonal antibody, HRP (PMB96431) at 0.1 µg/mL.

Predict MW: 46 kDa

Observed MW: 46 kDa