

Anti-Human CD157/BST1 Antibody (A2)

Summary

Catalog No.	FHG26610
Clone ID	A2
Host species	Mouse
Conjugation	Unconjugated
Species reactivity	Human
Form	Liquid
Storage buffer	0.01M PBS, pH 7.4.
Concentration	1 mg/ml
Purity	>95% as determined by SDS-PAGE.
Clonality	Monoclonal
Isotype	IgG1, kappa
Applications	FCM
Target	ADP-ribosyl cyclase/cyclic ADP-ribose hydrolase 2, Bone marrow stromal antigen 1, BST-1, ADP-ribosyl cyclase 2, CD157, Cyclic ADP-ribose hydrolase 2, BST1, cADPr hydrolase 2
Purification	Protein A/G purified from cell culture supernatant.
Endotoxin level	Please contact with the lab for this information.
Accession	Q10588

Stability and Storage

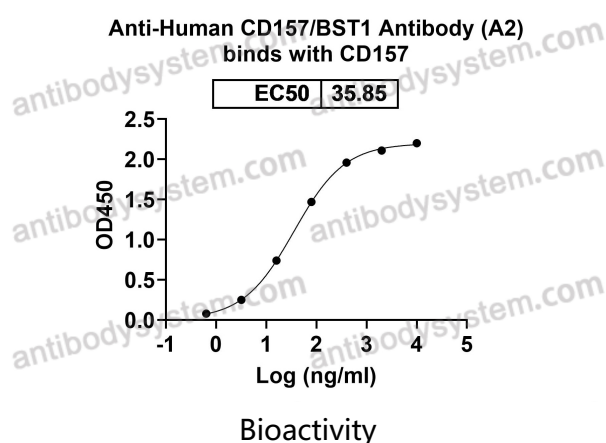
Use a manual defrost freezer and avoid repeated freeze-thaw cycles.

Store at 4°C short term (1-2 weeks). Store at -20°C 12 months. Store at -80°C long term.

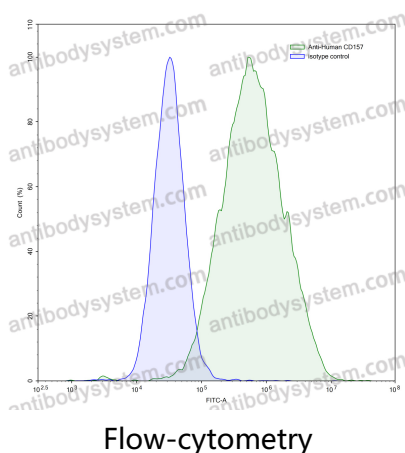
Note

For research use only.

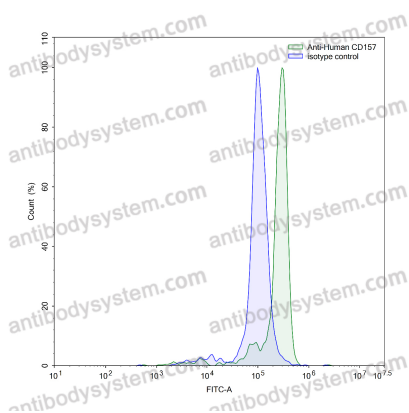
Data Image



Detects CD157/BST1 in indirect ELISAs.



Flow-cytometry using anti-human CD157 antibody. CD157 Transfected CHO cells were stained with an irrelevant antibody (Blue Histogram) or an anti-human CD157 antibody monoclonal antibody (Catalog # FHG26610, Green Histogram) at a concentration of 5 µg/ml for 30 mins at RT. After washing, bound antibody was detected using a FITC conjugated goat anti-mouse antibody (Catalog # PMB96441) and cells analysed on a NovoCyte Flow Cytometer.



Flow-cytometry

Flow-cytometry using anti-human CD157 antibody. Human peripheral blood monocytes were stained with an irrelevant antibody (Blue Histogram) or an anti-human CD157 antibody monoclonal antibody (Catalog # FHG26610, Green Histogram) at a concentration of 5 $\mu\text{g}/\text{ml}$ for 30 mins at RT. After washing, bound antibody was detected using a FITC conjugated goat anti-mouse antibody (Catalog # PMB96441) and cells analysed on a NovoCyt Flow Cytometer.