

Anti-Human CD146/MUC18/MCAM Antibody (C3.19.1)

Summary

Catalog No.	FHE39710
Clone ID	C3.19.1
Host species	Mouse
Conjugation	Unconjugated
Species reactivity	Human
Form	Liquid
Storage buffer	0.01M PBS, pH 7.4.
Concentration	1 mg/ml
Purity	>95% as determined by SDS-PAGE.
Clonality	Monoclonal
Isotype	IgG2a, kappa
Applications	FCM
Target	CD146, Melanoma cell adhesion molecule, S-endo 1 endothelial-associated antigen, Melanoma-associated antigen A32, MUC18, MCAM, Melanoma-associated antigen MUC18, Cell surface glycoprotein MUC18, Cell surface glycoprotein P1H12
Purification	Protein A/G purified from cell culture supernatant.
Endotoxin level	Please contact with the lab for this information.
Accession	P43121

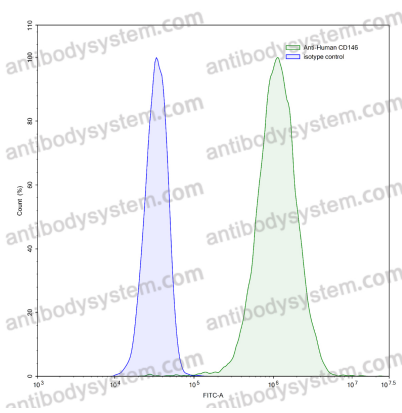
Stability and Storage

Use a manual defrost freezer and avoid repeated freeze-thaw cycles.
Store at 4°C short term (1-2 weeks). Store at -20°C 12 months. Store at -80°C long term.

Note

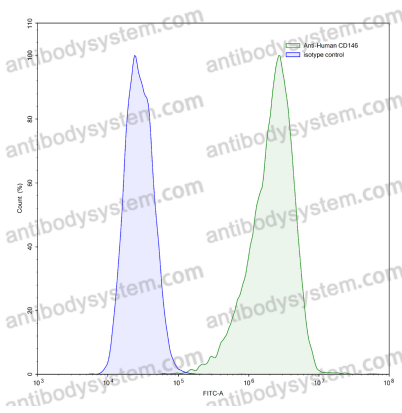
For research use only.

Data Image



Flow-cytometry

Flow-cytometry using anti-human CD146 antibody. HeLa cells were stained with an irrelevant antibody (Blue Histogram) or an anti-human CD146 antibody monoclonal antibody (Catalog # FHE39710, Green Histogram) at a concentration of 5 µg/ml for 30 mins at RT. After washing, bound antibody was detected using a FITC conjugated goat anti-mouse antibody (Catalog # PMB96441) and cells analysed on a NovoCyte Flow Cytometer.



Flow-cytometry

Flow-cytometry using anti-human CD146 antibody. HUVEC cells were stained with an irrelevant antibody (Blue Histogram) or an anti-human CD146 antibody monoclonal antibody (Catalog # FHE39710, Green Histogram) at a concentration of 5 µg/ml for 30 mins at RT. After washing, bound antibody was detected using a FITC conjugated goat anti-mouse antibody (Catalog # PMB96441) and cells analysed on a NovoCyte Flow Cytometer.