

Anti-Human CLEC5A/MDL1 Antibody (DX246)

Summary

Catalog No.	FHK16010
Clone ID	DX246
Host species	Human
Conjugation	Unconjugated
Species reactivity	Human
Form	Liquid
Storage buffer	0.01M PBS, pH 7.4.
Concentration	2.17 mg/ml
Purity	>95% as determined by SDS-PAGE.
Clonality	Monoclonal
Isotype	IgG1, kappa
Applications	FCM
Target	C-type lectin superfamily member 5, C-type lectin domain family 5 member A, CLEC5A, MDL-1, CLECSF5, MDL1, Myeloid DAP12-associating lectin 1
Purification	Protein A/G purified from cell culture supernatant.
Endotoxin level	Please contact with the lab for this information.
Accession	Q9NY25

Stability and Storage

Use a manual defrost freezer and avoid repeated freeze-thaw cycles.

Store at 4°C short term (1-2 weeks). Store at -20°C 12 months. Store at -80°C long term.

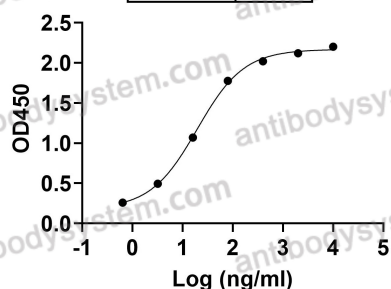
Note

For research use only.

Data Image

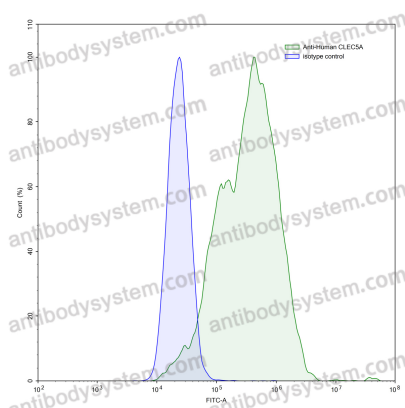
Anti-Human CLEC5A/MDL1 Antibody (DX246)
binds with CLEC5A

EC50	19.54
------	-------



Bioactivity

Detects CLEC5A/MDL1 in indirect ELISAs.



Flow-cytometry

Flow-cytometry using anti-human CLEC5A antibody. CLEC5A Transfected CHO cells were stained with an irrelevant antibody (Blue Histogram) or an anti-human CLEC5A antibody monoclonal antibody (Catalog # FHK16010, Green Histogram) at a concentration of 5 µg/ml for 30 mins at RT. After washing, bound antibody was detected using a FITC conjugated goat anti-human antibody (Catalog # PHB96441) and cells analysed on a NovoCyte Flow Cytometer.