

Anti-Human EGFR/ERBB1/HER1 Antibody (E7.6.3)

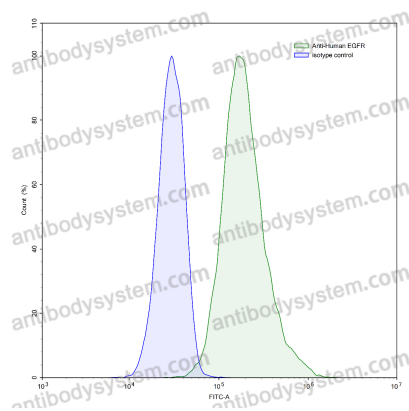
Summary

Catalog No.	FHB86920
Clone ID	E7.6.3
Host species	Human
Conjugation	Unconjugated
Species reactivity	Human
Form	Liquid
Storage buffer	0.01M PBS, pH 7.4.
Concentration	1 mg/ml
Purity	>95% as determined by SDS-PAGE.
Clonality	Monoclonal
Isotype	IgG2, kappa
Applications	FCM
Target	HER1, Receptor tyrosine-protein kinase erbB-1, Proto-oncogene c-ErbB-1, Epidermal growth factor receptor, EGFR, ERBB1, ERBB
Purification	Protein A/G purified from cell culture supernatant.
Endotoxin level	Please contact with the lab for this information.
Accession	P00533
Stability and Storage	Use a manual defrost freezer and avoid repeated freeze-thaw cycles. Store at 4°C short term (1-2 weeks). Store at -20°C 12 months. Store at -80°C long term.

Note

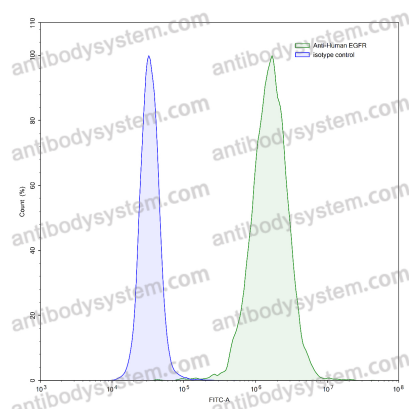
For research use only.

Data Image



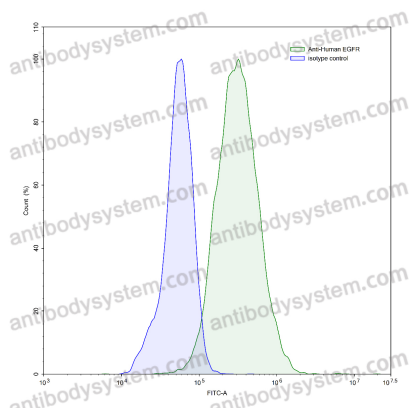
Flow-cytometry

Flow-cytometry using anti-human EGFR antibody. HeLa cells were stained with an irrelevant antibody (Blue Histogram) or an anti-human EGFR antibody monoclonal antibody (Catalog # FHB86920, Green Histogram) at a concentration of 5 µg/ml for 30 mins at RT. After washing, bound antibody was detected using a FITC conjugated goat anti-human antibody (Catalog # PHB96441) and cells analysed on a NovoCyt Flow Cytometer.



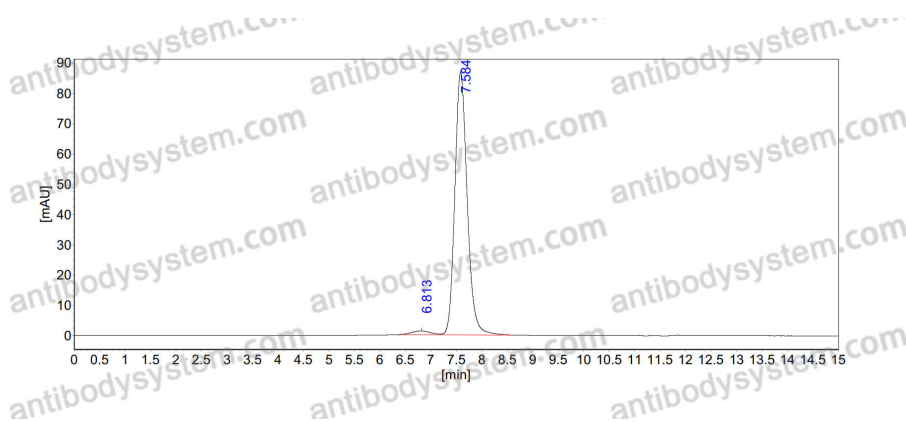
Flow-cytometry

Flow-cytometry using anti-human EGFR antibody. A431 cells were stained with an irrelevant antibody (Blue Histogram) or an anti-human EGFR antibody monoclonal antibody (Catalog # FHB86920, Green Histogram) at a concentration of 5 µg/ml for 30 mins at RT. After washing, bound antibody was detected using a FITC conjugated goat anti-human antibody (Catalog # PHB96441) and cells analysed on a NovoCyt Flow Cytometer.



Flow-cytometry

Flow-cytometry using anti-human EGFR antibody. SK-BR-3 cells were stained with an irrelevant antibody (Blue Histogram) or an anti-human EGFR antibody monoclonal antibody (Catalog # FHB86920, Green Histogram) at a concentration of 5 µg/ml for 30 mins at RT. After washing, bound antibody was detected using a FITC conjugated goat anti-human antibody (Catalog # PHB96441) and cells analysed on a NovoCyt Flow Cytometer.



SEC-HPLC

The purity of this product is >95% as determined by SEC-HPLC.