

Anti-Human FOLH1/PSMA Antibody (J591)

Summary

Catalog No.	FHG01310
Clone ID	J591
Host species	Human
Conjugation	Unconjugated
Species reactivity	Human
Form	Liquid
Storage buffer	0.01M PBS, pH 7.4.
Concentration	1.58 mg/ml
Purity	>95% as determined by SDS-PAGE.
Clonality	Monoclonal
Isotype	IgG1
Applications	FCM
Target	NAALAD1, Prostate-specific membrane antigen, NAALADase I, PSMA, PSM, Pteroylpoly-gamma-glutamate carboxypeptidase, Glutamate carboxypeptidase 2, N-acetylated-alpha-linked acidic dipeptidase I, Glutamate carboxypeptidase II, FOLH1, FGCP, FOLH, Folylpoly-gamma-glutamate carboxypeptidase, Folate hydrolase 1, GCPII, Membrane glutamate carboxypeptidase, Cell growth-inhibiting gene 27 protein, mGCP
Purification	Protein A/G purified from cell culture supernatant.
Endotoxin level	Please contact with the lab for this information.

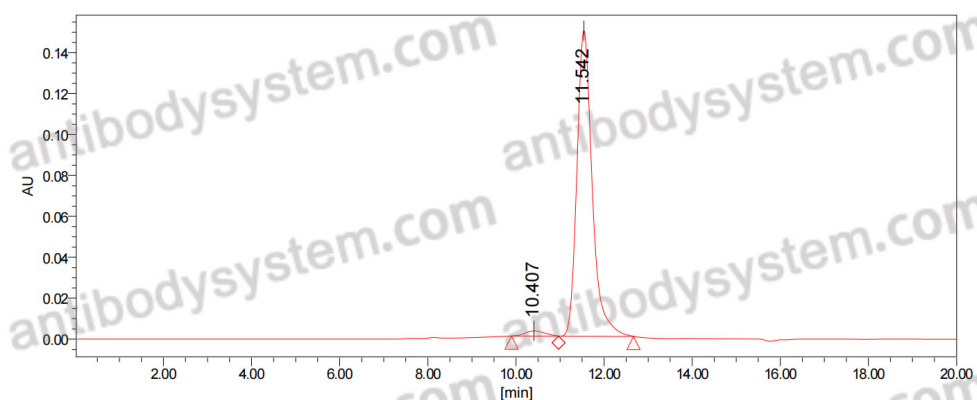
Recombinant Proteins & Antibodies

Accession Q04609

Use a manual defrost freezer and avoid repeated freeze-thaw cycles.

Stability and Storage Store at 4°C short term (1-2 weeks). Store at -20°C 12 months. Store at -80°C long term.**Note** For research use only.

Data Image



SEC-HPLC

The purity of this product is >95% as determined by SEC-HPLC.