

# Anti-Human FOLR1 Antibody (SAA0117)

## Summary

---

<b>Catalog No.</b>	FHD10410
<b>Clone ID</b>	SAA0117
<b>Host species</b>	Human
<b>Conjugation</b>	Unconjugated
<b>Species reactivity</b>	Human
<b>Form</b>	Liquid
<b>Storage buffer</b>	0.01M PBS, pH 7.4.
<b>Concentration</b>	1 mg/ml
<b>Purity</b>	>95% as determined by SDS-PAGE.
<b>Clonality</b>	Monoclonal
<b>Isotype</b>	IgG1, kappa
<b>Applications</b>	FCM
<b>Target</b>	Folate receptor alpha, FOLR, FOLR1, Adult folate-binding protein, Folate receptor 1, FR-alpha, KB cells FBP, FBP, Ovarian tumor-associated antigen MOv18, Folate receptor, adult
<b>Purification</b>	Protein A/G purified from cell culture supernatant.
<b>Endotoxin level</b>	Please contact with the lab for this information.
<b>Accession</b>	P15328

### Stability and Storage

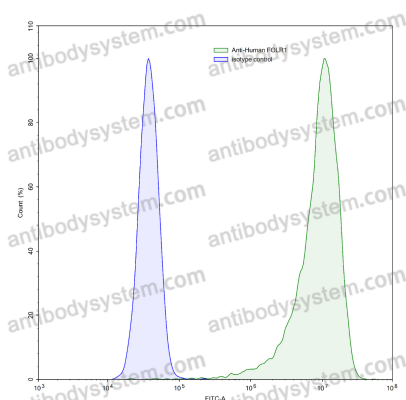
Use a manual defrost freezer and avoid repeated freeze-thaw cycles.

Store at 4°C short term (1-2 weeks). Store at -20°C 12 months. Store at -80°C long term.

### Note

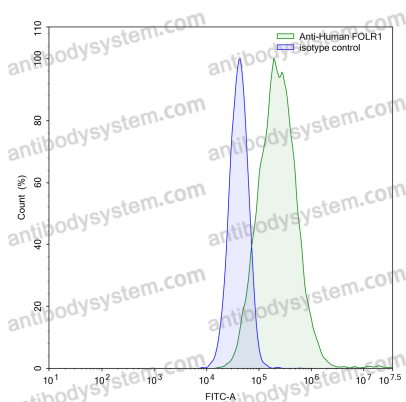
For research use only.

## Data Image



Flow-cytometry

Flow-cytometry using anti-human FOLR1 antibody. HeLa cells were stained with an irrelevant antibody (Blue Histogram) or an anti-human FOLR1 antibody monoclonal antibody (Catalog # FHD10410, Green Histogram) at a concentration of 5 µg/ml for 30 mins at RT. After washing, bound antibody was detected using a FITC conjugated goat anti-human antibody (Catalog # PHB96441) and cells analysed on a NovoCyt Flow Cytometer.



Flow-cytometry

Flow-cytometry using anti-human FOLR1 antibody. MCF7 cells were stained with an irrelevant antibody (Blue Histogram) or an anti-human FOLR1 antibody monoclonal antibody (Catalog # FHD10410, Green Histogram) at a concentration of 5 µg/ml for 30 mins at RT. After washing, bound antibody was detected using a FITC conjugated goat anti-human antibody (Catalog # PHB96441) and cells analysed on a NovoCyt Flow Cytometer.