

# Anti-Human GOLM1/GP73 Antibody (SAA0106)

## Summary

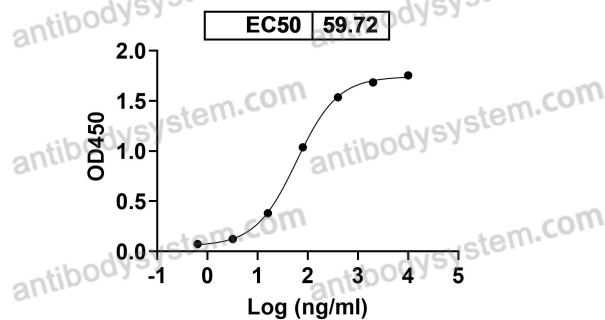
---

<b>Catalog No.</b>	FHJ23810
<b>Clone ID</b>	SAA0106
<b>Host species</b>	Mouse
<b>Conjugation</b>	Unconjugated
<b>Species reactivity</b>	Human
<b>Form</b>	Liquid
<b>Storage buffer</b>	0.01M PBS, pH 7.4.
<b>Concentration</b>	1.47 mg/ml
<b>Purity</b>	>95% as determined by SDS-PAGE.
<b>Clonality</b>	Monoclonal
<b>Isotype</b>	IgG1
<b>Applications</b>	FCM
<b>Target</b>	Golgi phosphoprotein 2, C9orf155, Golgi membrane protein GP73, Golgi membrane protein 1, GOLPH2, GOLM1
<b>Purification</b>	Protein A/G purified from cell culture supernatant.
<b>Endotoxin level</b>	Please contact with the lab for this information.
<b>Accession</b>	Q8NBJ4
<b>Stability and Storage</b>	Use a manual defrost freezer and avoid repeated freeze-thaw cycles. Store at 4°C short term (1-2 weeks). Store at -20°C 12 months. Store at -80°C long term.

**Note** For research use only.

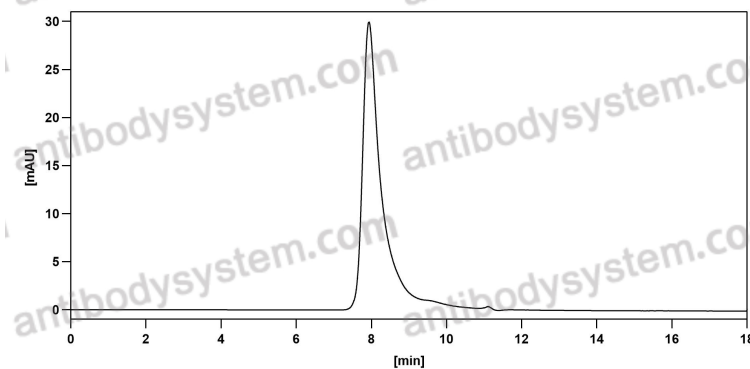
## Data Image

**Anti-Human GOLM1/GP73 Antibody (SAA0106)**  
binds with Human GP73



Detects GOLM1/GP73 in indirect ELISAs.

**Bioactivity**



The purity of this product is >95% as determined by SEC-HPLC.

**SEC-HPLC**