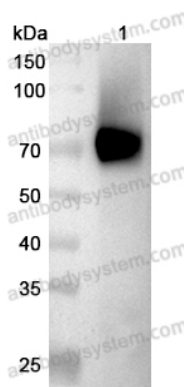


Anti-Human GPC3 Antibody (SAA0134)

Summary

Catalog No.	FHE84610
Clone ID	SAA0134
Host species	Human
Conjugation	Unconjugated
Species reactivity	Human
Form	Liquid
Storage buffer	0.01M PBS, pH 7.4.
Concentration	1.1 mg/ml
Purity	>95% as determined by SDS-PAGE.
Clonality	Monoclonal
Isotype	IgG1, kappa
Applications	ELISA, FCM, WB
Target	GPC3, MXR7, GTR2-2, Glypican-3, Intestinal protein OCI-5, OCI5
Purification	Protein A/G purified from cell culture supernatant.
Endotoxin level	Please contact with the lab for this information.
Accession	P51654
Stability and Storage	Use a manual defrost freezer and avoid repeated freeze-thaw cycles. Store at 4°C short term (1-2 weeks). Store at -20°C 12 months. Store at -80°C long term.
Note	For research use only.

Data Image



Western Blot

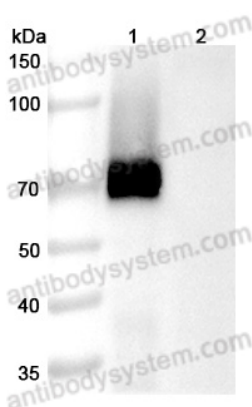
Recombinant Protein subjected to SDS PAGE followed by western blot with Anti-Human GPC3 antibody (FHE84610) at 1µg/ml.

Lane 1: Recombinant Human GPC3 protein(
[EHE84601](#))

Second Ab: Goat Anti-Human IgG H&L Polyclonal antibody, HRP (PHB96431) at 0.1 µg/mL.

Predict MW: 70 kDa

Observed MW: 70 kDa



Western Blot

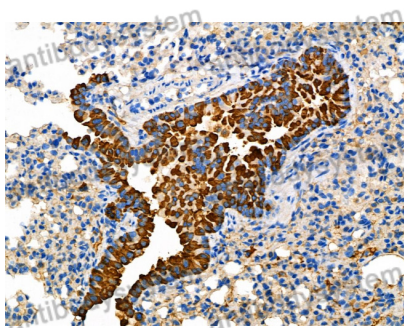
Various lysates were subjected to SDS PAGE followed by western blot with Anti Human GPC3 antibody [SAA0134] (FHE84610) at 1µg/ml.

Lane 1: Human GPC3 transfected HEK293 cell lysate

Lane 2: Non-transfected HEK293 cell lysate

Second Ab: Goat Anti-Human IgG H&L Polyclonal antibody, HRP (PHB96431) at 0.1 µg/mL.

Predict MW: 64 kDa



Immunohistochemical analysis of mouse lung stained for GPC3 with FHE84610.

Immunohistochemical