

# Anti-Human HLA-A,B,C Antibody (W6/32)

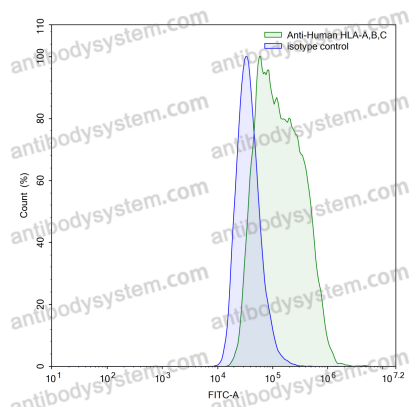
## Summary

---

<b>Catalog No.</b>	FHM00110
<b>Clone ID</b>	W6/32
<b>Host species</b>	Mouse
<b>Conjugation</b>	Unconjugated
<b>Species reactivity</b>	Human
<b>Form</b>	Liquid
<b>Storage buffer</b>	0.01M PBS, pH 7.4.
<b>Concentration</b>	1.65 mg/ml
<b>Purity</b>	>95% as determined by SDS-PAGE.
<b>Clonality</b>	Monoclonal
<b>Isotype</b>	IgG2a, kappa
<b>Applications</b>	ELISA, FCM, ICC, IHC-Fr, IP, WB
<b>Purification</b>	Protein A/G purified from cell culture supernatant.
<b>Endotoxin level</b>	Please contact with the lab for this information.
<b>Stability and Storage</b>	Use a manual defrost freezer and avoid repeated freeze-thaw cycles. Store at 4°C short term (1-2 weeks). Store at -20°C 12 months. Store at -80°C long term.
<b>Note</b>	For research use only.

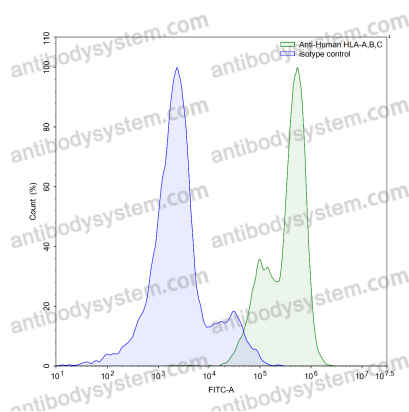
## Data Image

---



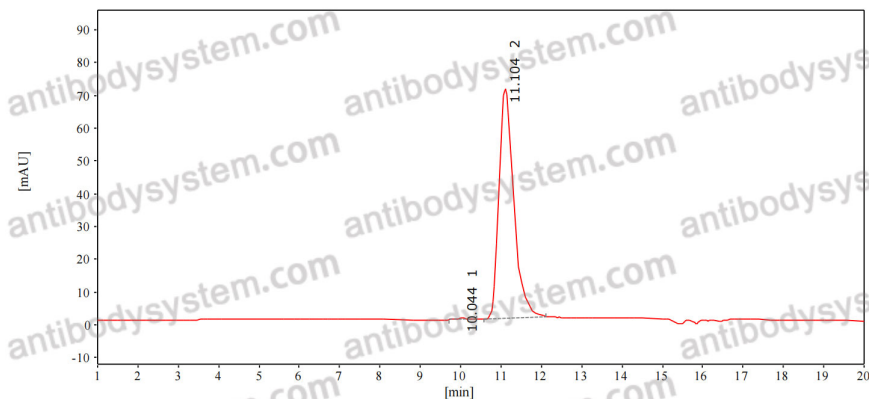
Flow-cytometry

Flow-cytometry using anti-human HLA-A,B,C Monomorphic antibody.K562 cells were stained with an irrelevant antibody (Blue Histogram) or an anti-human HLA-A,B,C Monomorphic antibody monoclonal antibody (Catalog # FHM00110 ,Green Histogram) at a concentration of 5 µg/ml for 30 mins at RT. After washing, bound antibody was detected using a FITC conjugated goat anti-mouse antibody (Catalog # PMB96441) and cells analysed on a NovoCyte Flow Cytometer.



Flow-cytometry

Flow-cytometry using anti-human HLA-A,B,C antibody.Human peripheral blood lymphocytes were stained with an irrelevant antibody (Blue Histogram) or an anti-human HLA-A,B,C antibody monoclonal antibody (Catalog # FHM00110 ,Green Histogram) at a concentration of 5 µg/ml for 30 mins at RT. After washing, bound antibody was detected using a FITC conjugated goat anti-mouse antibody (Catalog # PMB96441) and cells analysed on a NovoCyte Flow Cytometer.



SEC-HPLC

The purity of this product is >95% as determined by SEC-HPLC.