

# Anti-Human HLA-DRA Antibody (1D09C3)

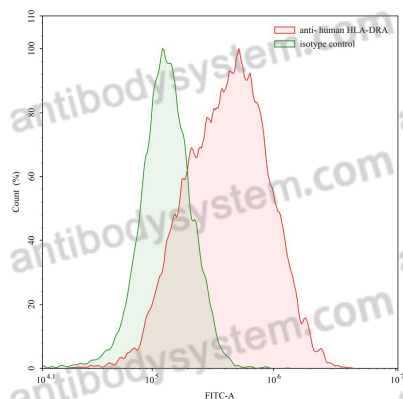
## Summary

---

<b>Catalog No.</b>	FHM00810
<b>Clone ID</b>	1D09C3
<b>Host species</b>	Mouse
<b>Conjugation</b>	Unconjugated
<b>Species reactivity</b>	Human
<b>Form</b>	Liquid
<b>Storage buffer</b>	0.01M PBS, pH 7.4.
<b>Concentration</b>	1 mg/ml
<b>Purity</b>	>95% as determined by SDS-PAGE.
<b>Clonality</b>	Monoclonal
<b>Isotype</b>	IgG1, kappa
<b>Applications</b>	FCM
<b>Target</b>	HLA-DRA1, MHC class II antigen DRA, HLA-DRA, HLA class II histocompatibility antigen, DR alpha chain
<b>Purification</b>	Protein A/G purified from cell culture supernatant.
<b>Endotoxin level</b>	Please contact with the lab for this information.
<b>Accession</b>	P01903
<b>Stability and Storage</b>	Use a manual defrost freezer and avoid repeated freeze-thaw cycles. Store at 4°C short term (1-2 weeks). Store at -20°C 12 months. Store at -80°C long term.

**Note**

For research use only.

**Data Image**

Flow-cytometry

Flow-cytometry using anti- human HLA-DRA antibody. Human U-87 cell line were stained with an irrelevant antibody (Green Histogram) or an anti-human HLA-DRA antibody monoclonal antibody (Catalog # FHM00810 , Red Histogram) at a concentration of 20  $\mu$ g/ml for 30 mins at RT. After washing, bound antibody was detected using a FITC conjugated goat anti-mouse antibody (Catalog # PMB96441) and cells analysed on a NovoCyte Flow Cytometer.