

# Anti-Human MET/c-Met/HGFR Antibody (224G11)

## Summary

---

<b>Catalog No.</b>	FHC34220
<b>Clone ID</b>	224G11
<b>Host species</b>	Human
<b>Conjugation</b>	Unconjugated
<b>Species reactivity</b>	Human
<b>Form</b>	Liquid
<b>Storage buffer</b>	0.01M PBS, pH 7.4.
<b>Concentration</b>	1 mg/ml
<b>Purity</b>	>95% as determined by SDS-PAGE.
<b>Clonality</b>	Monoclonal
<b>Isotype</b>	IgG1, kappa
<b>Applications</b>	FCM
<b>Target</b>	Tyrosine-protein kinase Met, Hepatocyte growth factor receptor, Proto-oncogene c-Met, Scatter factor receptor, HGF receptor, SF receptor, HGF/SF receptor, MET
<b>Purification</b>	Protein A/G purified from cell culture supernatant.
<b>Endotoxin level</b>	Please contact with the lab for this information.
<b>Accession</b>	P08581

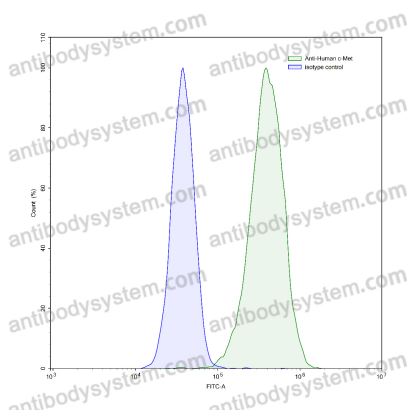
**Stability and Storage**

Use a manual defrost freezer and avoid repeated freeze-thaw cycles.

Store at 4°C short term (1-2 weeks). Store at -20°C 12 months. Store at -80°C long term.

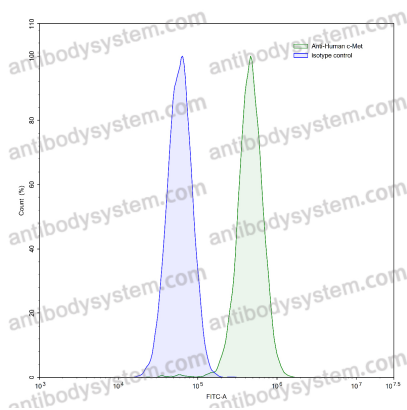
**Note**

For research use only.

**Data Image**

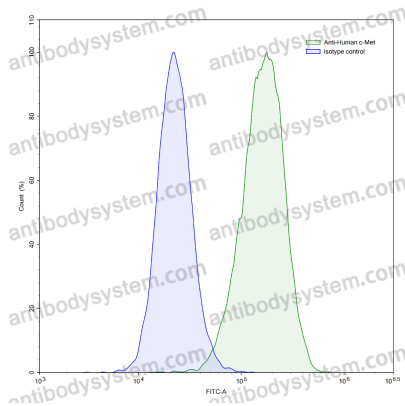
Flow-cytometry

Flow-cytometry using anti-human c-Met antibody. HeLa cells were stained with an irrelevant antibody (Blue Histogram) or an anti-human c-Met antibody monoclonal antibody (Catalog # FHC34220, Green Histogram) at a concentration of 5 µg/ml for 30 mins at RT. After washing, bound antibody was detected using a FITC conjugated goat anti-human antibody (Catalog # PHB96441) and cells analysed on a NovoCyte Flow Cytometer.



Flow-cytometry

Flow-cytometry using anti-human c-Met antibody. HepG2 cells were stained with an irrelevant antibody (Blue Histogram) or an anti-human c-Met antibody monoclonal antibody (Catalog # FHC34220, Green Histogram) at a concentration of 5 µg/ml for 30 mins at RT. After washing, bound antibody was detected using a FITC conjugated goat anti-human antibody (Catalog # PHB96441) and cells analysed on a NovoCyte Flow Cytometer.



Flow-cytometry

Flow-cytometry using anti-human c-Met antibody. HT-29 cells were stained with an irrelevant antibody (Blue Histogram) or an anti-human c-Met antibody monoclonal antibody (Catalog # FHC34220, Green Histogram) at a concentration of 5 µg/ml for 30 mins at RT. After washing, bound antibody was detected using a FITC conjugated goat anti-human antibody (Catalog # PHB96441) and cells analysed on a NovoCyt Flow Cytometer.