

Anti-Human MET/c-Met/HGFR Antibody (SAA0111)

Summary

Catalog No.	FHC34210
Clone ID	SAA0111
Host species	Human
Conjugation	Unconjugated
Species reactivity	Human
Form	Liquid
Storage buffer	0.01M PBS, pH 7.4.
Concentration	1 mg/ml
Purity	>95% as determined by SDS-PAGE.
Clonality	Monoclonal
Isotype	IgG4, kappa
Applications	FCM
Target	Tyrosine-protein kinase Met, Hepatocyte growth factor receptor, Proto-oncogene c-Met, Scatter factor receptor, HGF receptor, SF receptor, HGF/SF receptor, MET
Purification	Protein A/G purified from cell culture supernatant.
Endotoxin level	Please contact with the lab for this information.
Accession	P08581

Stability and Storage

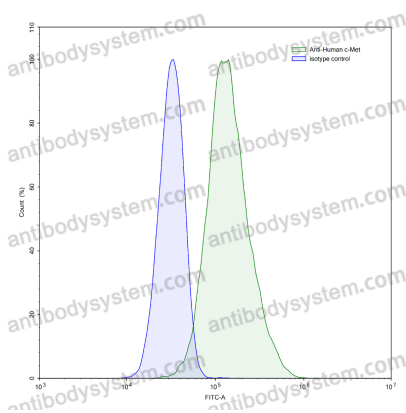
Use a manual defrost freezer and avoid repeated freeze-thaw cycles.

Store at 4°C short term (1-2 weeks). Store at -20°C 12 months. Store at -80°C long term.

Note

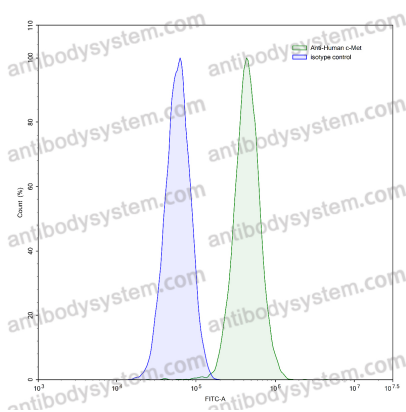
For research use only.

Data Image



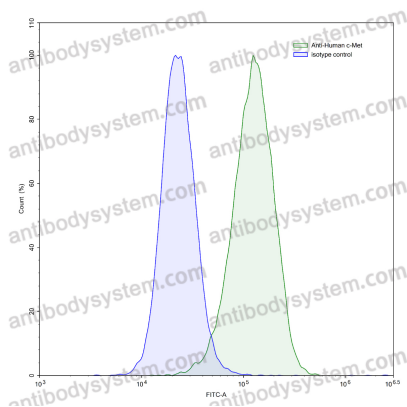
Flow-cytometry

Flow-cytometry using anti-human c-Met antibody. HeLa cells were stained with an irrelevant antibody (Blue Histogram) or an anti-human c-Met antibody monoclonal antibody (Catalog # FHC34210, Green Histogram) at a concentration of 5 µg/ml for 30 mins at RT. After washing, bound antibody was detected using a FITC conjugated goat anti-human antibody (Catalog # PHB96441) and cells analysed on a NovoCyt Flow Cytometer.



Flow-cytometry

Flow-cytometry using anti-human c-Met antibody. HepG2 cells were stained with an irrelevant antibody (Blue Histogram) or an anti-human c-Met antibody monoclonal antibody (Catalog # FHC34210, Green Histogram) at a concentration of 5 µg/ml for 30 mins at RT. After washing, bound antibody was detected using a FITC conjugated goat anti-human antibody (Catalog # PHB96441) and cells analysed on a NovoCyt Flow Cytometer.



Flow-cytometry

Flow-cytometry using anti-human c-Met antibody. HT-29 cells were stained with an irrelevant antibody (Blue Histogram) or an anti-human c-Met antibody monoclonal antibody (Catalog # FHC34210, Green Histogram) at a concentration of 5 µg/ml for 30 mins at RT. After washing, bound antibody was detected using a FITC conjugated goat anti-human antibody (Catalog # PHB96441) and cells analysed on a NovoCyt Flow Cytometer.