

Anti-Human MUC16/CA125 Antibody (SAA0161)

Summary

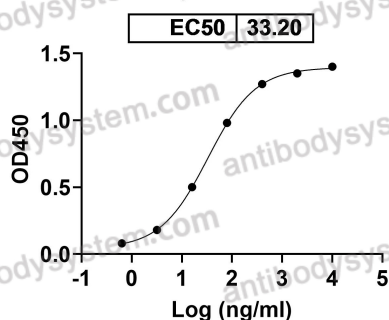
| | |
|------------------------------|---|
| Catalog No. | FHJ31030 |
| Clone ID | SAA0161 |
| Host species | Mouse |
| Conjugation | Unconjugated |
| Species reactivity | Human |
| Form | Liquid |
| Storage buffer | 0.01M PBS, pH 7.4. |
| Concentration | 1 mg/ml |
| Purity | >95% as determined by SDS-PAGE. |
| Clonality | Monoclonal |
| Isotype | IgG1, kappa |
| Applications | FCM |
| Target | Mucin-16, CA-125, Ovarian carcinoma antigen CA125, CA125, MUC-16, Ovarian cancer-related tumor marker CA125, MUC16 |
| Purification | Protein A/G purified from cell culture supernatant. |
| Endotoxin level | Please contact with the lab for this information. |
| Accession | Q8WXI7 |
| Stability and Storage | Use a manual defrost freezer and avoid repeated freeze-thaw cycles. Store at 4°C short term (1-2 weeks). Store at -20°C 12 months. Store at - 80°C long term. |

Note

For research use only.

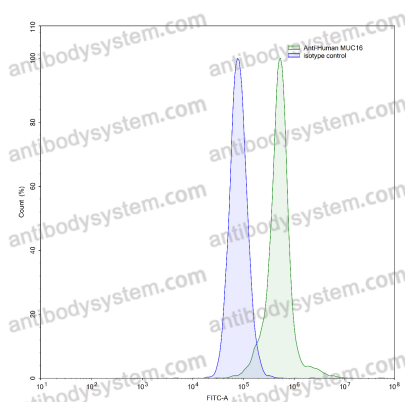
Data Image

Anti-Human MUC16/CA125 Antibody (SAA0161) binds with MUC16



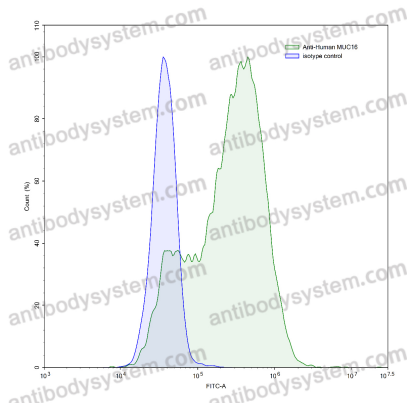
Bioactivity

Detects MUC16/CA125 in indirect ELISAs.



Flow-cytometry

Flow-cytometry using anti-human MUC16 antibody. HaCaT cells were stained with an irrelevant antibody (Blue Histogram) or an anti-human MUC16 antibody monoclonal antibody (Catalog # FHJ31030, Green Histogram) at a concentration of 5 µg/ml for 30 mins at RT. After washing, bound antibody was detected using a FITC conjugated goat anti-mouse antibody (Catalog # PMB96441) and cells analysed on a NovoCyte Flow Cytometer.



Flow-cytometry

Flow-cytometry using anti-human MUC16 antibody. HeLa cells were stained with an irrelevant antibody (Blue Histogram) or an anti-human MUC16 antibody monoclonal antibody (Catalog # FHJ31030, Green Histogram) at a concentration of 5 $\mu\text{g}/\text{ml}$ for 30 mins at RT. After washing, bound antibody was detected using a FITC conjugated goat anti-mouse antibody (Catalog # PMB96441) and cells analysed on a NovoCyt Flow Cytometer.