

# Anti-Human NOTCH1 Antibody (SAA0131)

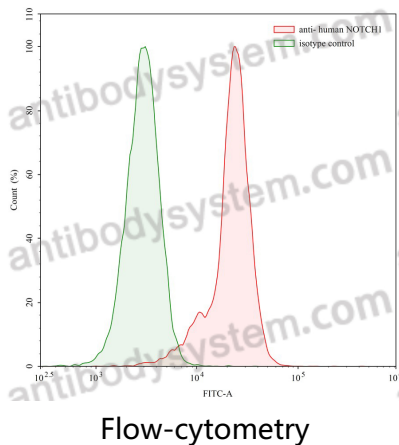
## Summary

---

<b>Catalog No.</b>	FHE48310
<b>Clone ID</b>	SAA0131
<b>Host species</b>	Human
<b>Conjugation</b>	Unconjugated
<b>Species reactivity</b>	Human
<b>Form</b>	Liquid
<b>Storage buffer</b>	0.01M PBS, pH 7.4.
<b>Concentration</b>	1 mg/ml
<b>Purity</b>	>95% as determined by SDS-PAGE.
<b>Clonality</b>	Monoclonal
<b>Isotype</b>	IgG2, lambda
<b>Applications</b>	FCM
<b>Target</b>	hN1, TAN1, NEXT, NICD, Notch 1, Neurogenic locus notch homolog protein 1, Translocation-associated notch protein TAN-1, NOTCH1
<b>Purification</b>	Protein A/G purified from cell culture supernatant.
<b>Endotoxin level</b>	Please contact with the lab for this information.
<b>Accession</b>	P46531
<b>Stability and Storage</b>	Use a manual defrost freezer and avoid repeated freeze-thaw cycles. Store at 4°C short term (1-2 weeks). Store at -20°C 12 months. Store at -80°C long term.

**Note**

For research use only.

**Data Image**

Flow-cytometry using anti- human NOTCH1 antibody. Human MOLT-4 cell line were stained with an irrelevant antibody (Green Histogram) or an anti- human NOTCH1 antibody monoclonal antibody (Catalog # FHE48310 , Red Histogram) at a concentration of 5 µg/ml for 30 mins at RT. After washing, bound antibody was detected using a FITC conjugated goat anti-human antibody (Catalog # PHB96441) and cells analysed on a NovoCyte Flow Cytometer.