

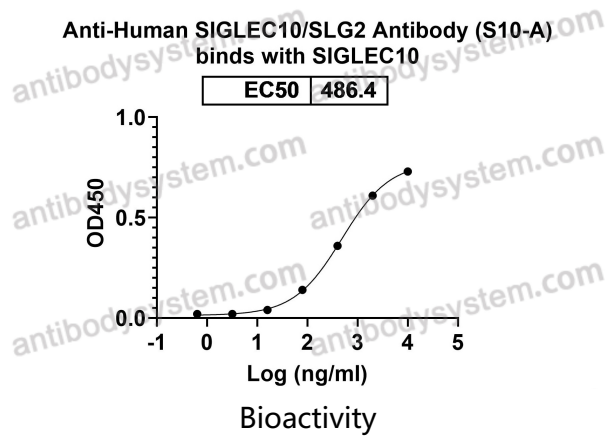
Anti-Human SIGLEC10/SLG2 Antibody (S10-A)

Summary

Catalog No.	FHJ40410
Clone ID	S10-A
Host species	Mouse
Conjugation	Unconjugated
Species reactivity	Human
Form	Liquid
Storage buffer	0.01M PBS, pH 7.4.
Concentration	1 mg/ml
Purity	>95% as determined by SDS-PAGE.
Clonality	Monoclonal
Isotype	IgG1, kappa
Applications	FCM
Target	SIGLEC10, Siglec-10, Sialic acid-binding Ig-like lectin 10, Siglec-like protein 2, SLG2
Purification	Protein A/G purified from cell culture supernatant.
Endotoxin level	Please contact with the lab for this information.
Accession	Q96LC7
Stability and Storage	Use a manual defrost freezer and avoid repeated freeze-thaw cycles. Store at 4°C short term (1-2 weeks). Store at -20°C 12 months. Store at -80°C long term.

Note For research use only.

Data Image



Detects SIGLEC10/SLG2 in indirect ELISAs.