

# Anti-Human SLC1A5 Antibody (SAA0181)

## Summary

---

<b>Catalog No.</b>	FHH18510
<b>Clone ID</b>	SAA0181
<b>Host species</b>	Human
<b>Conjugation</b>	Unconjugated
<b>Species reactivity</b>	Human
<b>Form</b>	Liquid
<b>Storage buffer</b>	0.01M PBS, pH 7.4.
<b>Concentration</b>	0.58 mg/ml
<b>Purity</b>	>95% as determined by SDS-PAGE.
<b>Clonality</b>	Monoclonal
<b>Isotype</b>	IgG1, kappa
<b>Applications</b>	FCM
<b>Target</b>	Baboon M7 virus receptor, SLC1A5, Solute carrier family 1 member 5, ASCT2, RDR, RD114/simian type D retrovirus receptor, Sodium-dependent neutral amino acid transporter type 2, ATB(0), Neutral amino acid transporter B(0), M7V1, RDRC
<b>Purification</b>	Protein A/G purified from cell culture supernatant.
<b>Endotoxin level</b>	Please contact with the lab for this information.
<b>Accession</b>	Q15758

### Stability and Storage

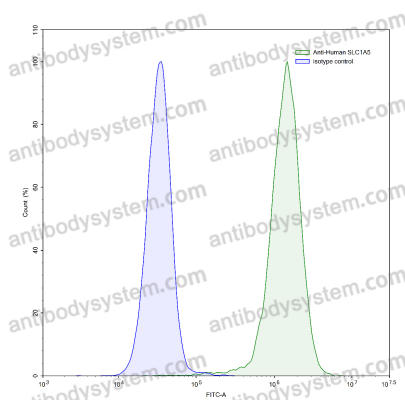
Use a manual defrost freezer and avoid repeated freeze-thaw cycles.

Store at 4°C short term (1-2 weeks). Store at -20°C 12 months. Store at -80°C long term.

### Note

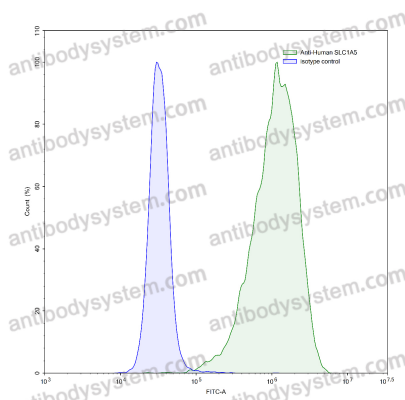
For research use only.

## Data Image



Flow-cytometry

Flow-cytometry using anti-human SLC1A5 antibody. HeLa cells were stained with an irrelevant antibody (Blue Histogram) or an anti-human SLC1A5 antibody monoclonal antibody (Catalog # FHH18510, Green Histogram) at a concentration of 5 µg/ml for 30 mins at RT. After washing, bound antibody was detected using a FITC conjugated goat anti-human antibody (Catalog # PHB96441) and cells analysed on a NovoCyt Flow Cytometer.



Flow-cytometry

Flow-cytometry using anti-human SLC1A5 antibody. A431 cells were stained with an irrelevant antibody (Blue Histogram) or an anti-human SLC1A5 antibody monoclonal antibody (Catalog # FHH18510, Green Histogram) at a concentration of 5 µg/ml for 30 mins at RT. After washing, bound antibody was detected using a FITC conjugated goat anti-human antibody (Catalog # PHB96441) and cells analysed on a NovoCyt Flow Cytometer.