

# Anti-Human CD107a/LAMP1 Antibody (Mab1)

## Summary

---

|                           |  |
|---------------------------|--|
| <b>Catalog No.</b>        | FHC87710   |
| <b>Clone ID</b>           | Mab1   |
| <b>Host species</b>       | Mouse  |
| <b>Conjugation</b>        | Unconjugated   |
| <b>Species reactivity</b> | Human  |
| <b>Form</b>               | Liquid   |
| <b>Storage buffer</b>     | 0.01M PBS, pH 7.4.   |
| <b>Concentration</b>      | 1.94 mg/ml   |
| <b>Purity</b>             | >95% as determined by SDS-PAGE.  |
| <b>Clonality</b>          | Monoclonal   |
| <b>Isotype</b>            | IgG1, kappa  |
| <b>Applications</b>       | FCM  |
| <b>Target</b>             | LAMP1, Lysosome-associated membrane protein 1, CD107 antigen-like family member A, CD107a, LAMP-1, Lysosome-associated membrane glycoprotein 1 |
| <b>Purification</b>       | Protein A/G purified from cell culture supernatant.  |
| <b>Endotoxin level</b>    | Please contact with the lab for this information.  |
| <b>Accession</b>          | P11279   |

## Recombinant Proteins &amp; Antibodies

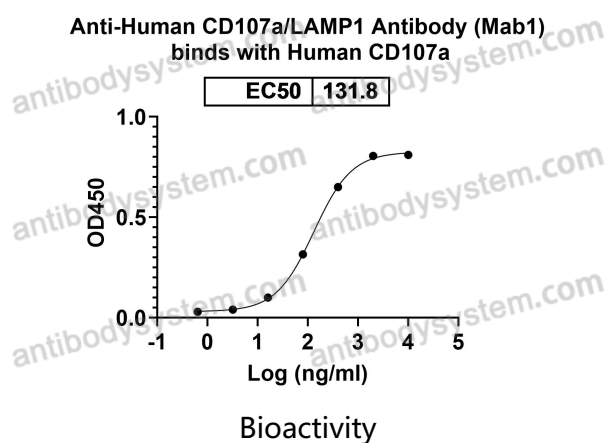
**Stability and Storage**

Use a manual defrost freezer and avoid repeated freeze-thaw cycles.

Store at 4°C short term (1-2 weeks). Store at -20°C 12 months. Store at -80°C long term.

**Note**

For research use only.

**Data Image**

Detects CD107a/LAMP1 in indirect ELISAs.