

# Recombinant HBV S/L-HBsAg/L glycoprotein

## Protein, C-S Tag

### Summary

---

|                                   |   |
|-----------------------------------|---|
| <b>Catalog No.</b>                | EVV03001  |
| <b>Alternative Names</b>          | Large envelope protein, L glycoprotein, L-HBsAg, LHB, Large S protein, Large surface protein, Major surface antigen, S  |
| <b>Form</b>                       | Lyophilized   |
| <b>Storage buffer</b>             | Lyophilized from a solution in PBS pH 7.4, 1mM EDTA, 4% Trehalose, 1% Mannitol.   |
| <b>Purity</b>                     | >90% as determined by SDS-PAGE.   |
| <b>Applications</b>               | ELISA, Immunogen, SDS-PAGE, WB, Bioactivity testing in progress   |
| <b>Endotoxin level</b>            | Please contact with the lab for this information.   |
| <b>Expression system</b>          | Mammalian Cells   |
| <b>Accession</b>                  | Q9E6S4  |
| <b>Protein length</b>             | Met175-Ile400   |
| <b>Nature</b>                     | Recombinant   |
| <b>Predicted molecular weight</b> | 29.41 kDa   |
| <b>Stability and Storage</b>      | Use a manual defrost freezer and avoid repeated freeze thaw cycles. Store at 2 to 8°C for frequent use. Store at -20 to -80°C for twelve months from the date of receipt. |
| <b>Reconstitution</b>             | Reconstitute in sterile water for a stock solution.   |
| <b>Species</b>                    | Hepatitis B virus   |

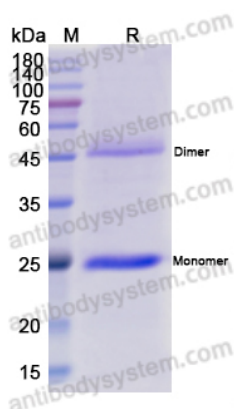
## Shipping

In general, proteins are provided as lyophilized powder/frozen liquid. They are shipped out with dry ice/blue ice unless customers require otherwise.

## Note

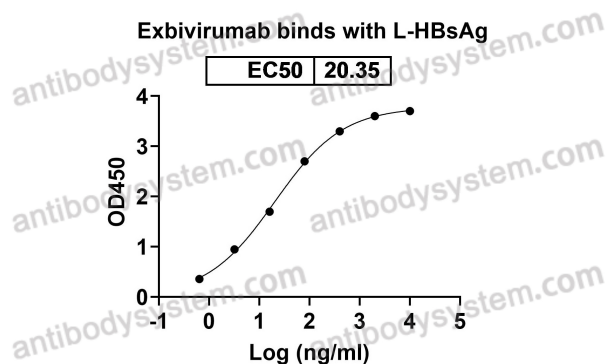
For research use only.

## Data Image



SDS-PAGE

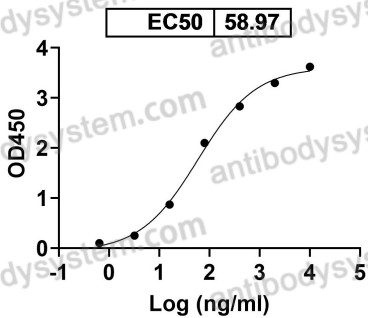
SDS PAGE for recombinant Hepatitis B virus S/L-HBsAg/L glycoprotein



Bioactivity

Detected Exbivirumab in indirect ELISAs.

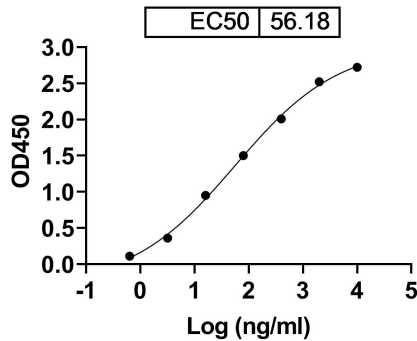
Libivirumab binds with L-HBsAg



Bioactivity

Detects Libivirumab in indirect ELISAs.

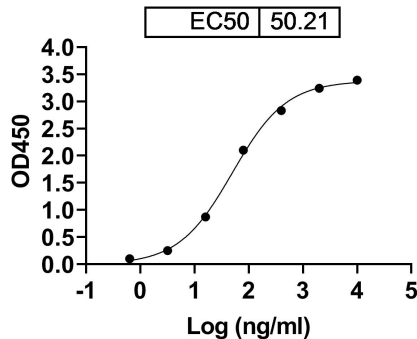
Iv0153 binds with HBV HBsAg Protein



Bioactivity

Detects HBV HBsAg antibody in indirect ELISAs.

Iv0154 binds with HBV HBsAg Protein



Bioactivity

Detects HBV HBsAg antibody in indirect ELISAs.