

# Anti-HCV NS1/gp68/gp70/Envelope glycoprotein E2 Antibody (C1)

## Summary

---

<b>Catalog No.</b>	RVV08627
<b>Clone ID</b>	C1
<b>Host species</b>	Human
<b>Species reactivity</b>	Hepatitis C virus genotype 1a (isolate H77) (HCV) & Hepatitis C virus genotype 1b (isolate BK) (HCV)
<b>Form</b>	Liquid
<b>Storage buffer</b>	0.01M PBS, pH 7.4.
<b>Concentration</b>	1 mg/ml
<b>Purity</b>	>95% as determined by SDS-PAGE.
<b>Clonality</b>	Monoclonal
<b>Isotype</b>	IgG1, kappa
<b>Applications</b>	ELISA, Neutralization
<b>Target</b>	NS1, gp68, gp70, Envelope glycoprotein E2, Genome polyprotein
<b>Purification</b>	Protein A/G purified from cell culture supernatant.
<b>Endotoxin level</b>	Please contact with the lab for this information.
<b>Expression system</b>	Mammalian Cells
<b>Accession</b>	P27958, P26663

## Recombinant Proteins &amp; Antibodies

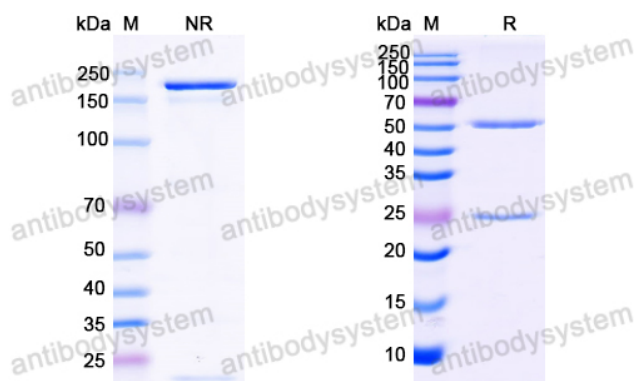
**Stability and Storage**

Use a manual defrost freezer and avoid repeated freeze-thaw cycles.

Store at 4°C short term (1-2 weeks). Store at -20°C 12 months. Store at -80°C long term.

**Note**

For research use only.

**Data Image**

SDS PAGE for HCV NS1/gp68/gp70/Envelope glycoprotein E2 Antibody (C1)

SDS-PAGE