

# Anti-HCV NS1/gp68/gp70/Envelope glycoprotein E2 Antibody (A12)

## Summary

---

|                           |  |
|---------------------------|--|
| <b>Catalog No.</b>        | RVV08621   |
| <b>Clone ID</b>           | A12  |
| <b>Host species</b>       | Human  |
| <b>Species reactivity</b> | Hepatitis C virus genotype 1a (isolate H77) (HCV) & Hepatitis C virus genotype 1b (isolate Japanese) (HCV) |
| <b>Form</b>               | Liquid   |
| <b>Storage buffer</b>     | 0.01M PBS, pH 7.4.   |
| <b>Concentration</b>      | 1 mg/ml  |
| <b>Purity</b>             | >95% as determined by SDS-PAGE.  |
| <b>Clonality</b>          | Monoclonal   |
| <b>Isotype</b>            | IgG1, kappa  |
| <b>Applications</b>       | ELISA, Neutralization  |
| <b>Target</b>             | NS1, gp68, gp70, Envelope glycoprotein E2, Genome polyprotein  |
| <b>Purification</b>       | Protein A/G purified from cell culture supernatant.  |
| <b>Endotoxin level</b>    | Please contact with the lab for this information.  |
| <b>Expression system</b>  | Mammalian Cells  |
| <b>Accession</b>          | P27958, P26662   |

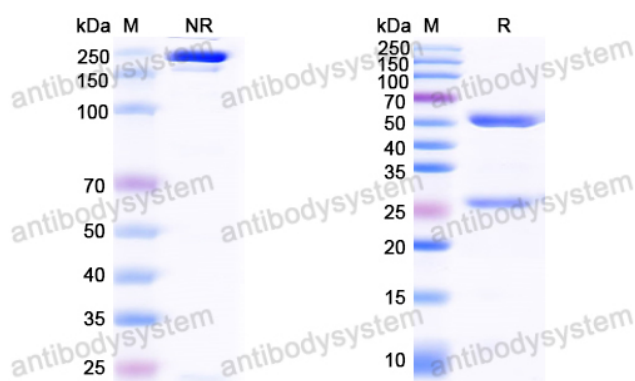
**Stability and Storage**

Use a manual defrost freezer and avoid repeated freeze-thaw cycles.

Store at 4°C short term (1-2 weeks). Store at -20°C 12 months. Store at -80°C long term.

**Note**

For research use only.

**Data Image**

SDS PAGE for HCV NS1/gp68/gp70/Envelope glycoprotein E2 Antibody (A12)

SDS-PAGE