

Anti-HCV NS1/gp68/gp70/Envelope glycoprotein E2 Antibody (3/11#)

Summary

| | |
|---------------------------|---|
| Catalog No. | RVV08616 |
| Clone ID | 3/11# |
| Host species | Human |
| Species reactivity | Hepatitis C virus genotype 1a (isolate H77) (HCV) & Hepatitis C virus genotype 2a (isolate HC-J6) (HCV) |
| Form | Liquid |
| Storage buffer | 0.01M PBS, pH 7.4. |
| Concentration | 1 mg/ml |
| Purity | >95% as determined by SDS-PAGE. |
| Clonality | Monoclonal |
| Isotype | IgG1, kappa |
| Applications | ELISA, Neutralization |
| Target | NS1, gp68, gp70, Envelope glycoprotein E2, Genome polyprotein |
| Purification | Protein A/G purified from cell culture supernatant. |
| Endotoxin level | Please contact with the lab for this information. |
| Expression system | Mammalian Cells |
| Accession | P27958, P26660 |

Recombinant Proteins & Antibodies

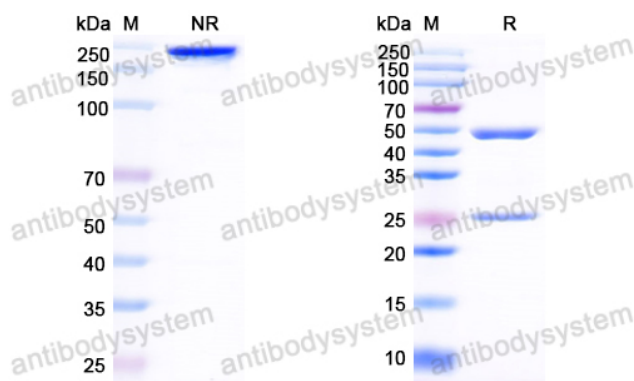
Stability and Storage

Use a manual defrost freezer and avoid repeated freeze-thaw cycles.

Store at 4°C short term (1-2 weeks). Store at -20°C 12 months. Store at -80°C long term.

Note

For research use only.

Data Image

SDS PAGE for HCV NS1/gp68/gp70/Envelope glycoprotein E2 Antibody (3/11#)

SDS-PAGE