

# Anti-HCV NS1/gp68/gp70/Envelope glycoprotein E2 Antibody (HC33.1)

## Summary

---

<b>Catalog No.</b>	RVV08610
<b>Clone ID</b>	HC33.1
<b>Host species</b>	Human
<b>Species reactivity</b>	Hepatitis C virus genotype 1a (isolate H77) (HCV)
<b>Form</b>	Liquid
<b>Storage buffer</b>	0.01M PBS, pH 7.4.
<b>Concentration</b>	4.18 mg/ml
<b>Purity</b>	>95% as determined by SDS-PAGE.
<b>Clonality</b>	Monoclonal
<b>Isotype</b>	IgG1, kappa
<b>Applications</b>	ELISA, Neutralization
<b>Target</b>	NS1, gp68, gp70, Envelope glycoprotein E2, Genome polyprotein
<b>Purification</b>	Protein A/G purified from cell culture supernatant.
<b>Endotoxin level</b>	Please contact with the lab for this information.
<b>Expression system</b>	Mammalian Cells
<b>Accession</b>	P27958-2

## Recombinant Proteins & Antibodies

### Stability and Storage

Use a manual defrost freezer and avoid repeated freeze-thaw cycles.

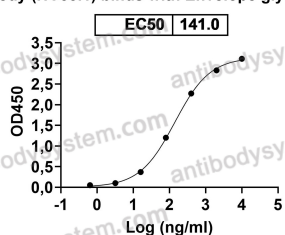
Store at 4°C short term (1-2 weeks). Store at -20°C 12 months. Store at -80°C long term.

### Note

For research use only.

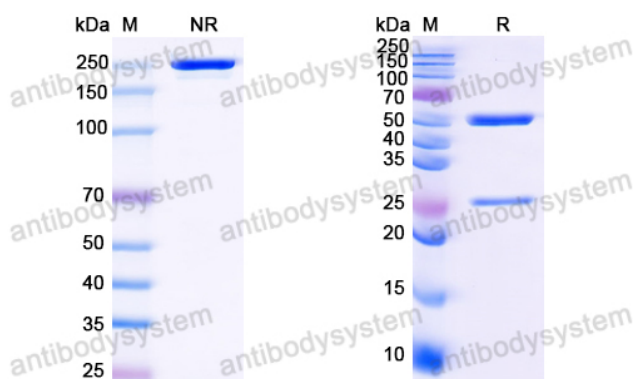
## Data Image

Anti-HCV NS1/gp68/gp70/Envelope glycoprotein E2  
Antibody (HC33.1) binds with Envelope glycoprotein E2



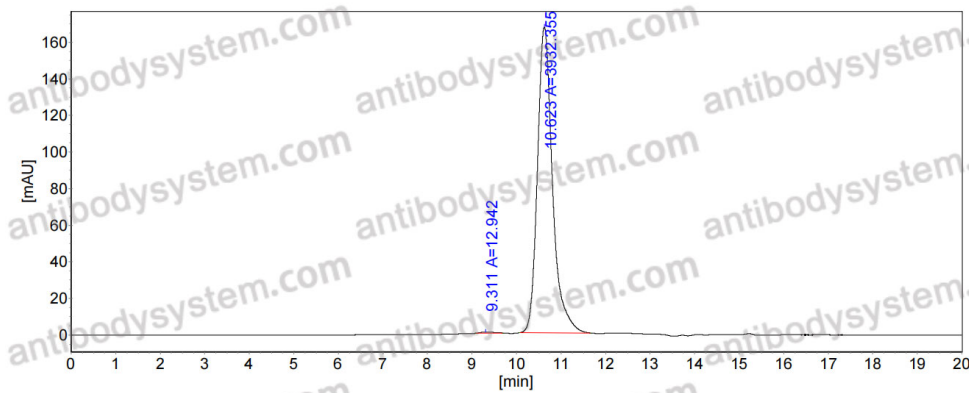
Detects Hepatitis C virus  
genotype 1a (isolate H77)  
(HCV)  
NS1/gp68/gp70/Envelope  
glycoprotein E2 in indirect  
ELISAs.

### Bioactivity



SDS PAGE for HCV  
NS1/gp68/gp70/Envelope  
glycoprotein E2 Antibody  
(HC33.1)

### SDS-PAGE



SEC-HPLC

The purity of this product is >95% as determined by SEC-HPLC.