

# Anti-HPV16 L1/Major capsid protein L1 Antibody (H16.U4)

## Summary

---

<b>Catalog No.</b>	RVV08804
<b>Clone ID</b>	H16.U4
<b>Host species</b>	Human
<b>Species reactivity</b>	Human papillomavirus type 16
<b>Form</b>	Liquid
<b>Storage buffer</b>	0.01M PBS, pH 7.4.
<b>Concentration</b>	2.73 mg/ml
<b>Purity</b>	>95% as determined by SDS-PAGE.
<b>Clonality</b>	Monoclonal
<b>Isotype</b>	IgG1, kappa
<b>Applications</b>	ELISA, Neutralization
<b>Target</b>	L1, Major capsid protein L1
<b>Purification</b>	Protein A/G purified from cell culture supernatant.
<b>Endotoxin level</b>	Please contact with the lab for this information.
<b>Expression system</b>	Mammalian Cells
<b>Accession</b>	P03101

## Recombinant Proteins & Antibodies

### Stability and Storage

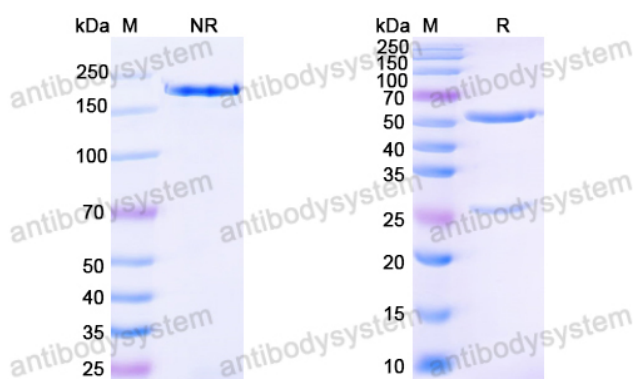
Use a manual defrost freezer and avoid repeated freeze-thaw cycles.

Store at 4°C short term (1-2 weeks). Store at -20°C 12 months. Store at -80°C long term.

### Note

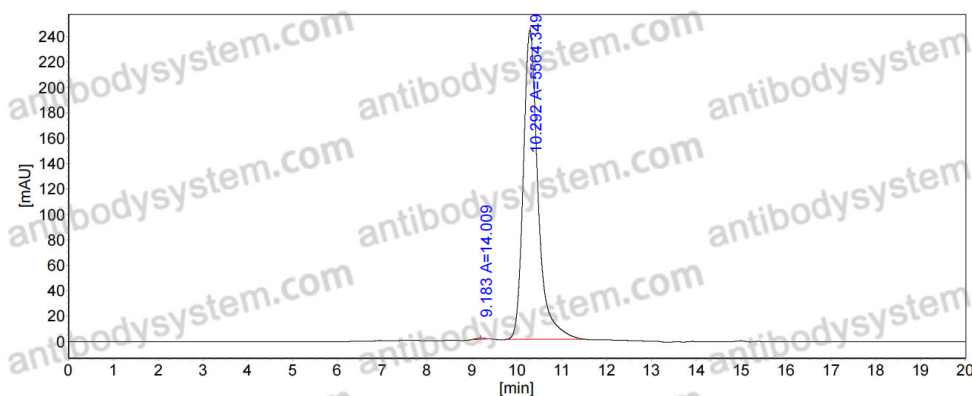
For research use only.

## Data Image



SDS PAGE for HPV16 L1/Major capsid protein L1 Antibody (H16.U4)

SDS-PAGE



The purity of this product is >95% as determined by SEC-HPLC.

SEC-HPLC