

# Research Grade Romlusevimab

## Summary

---

<b>Catalog No.</b>	DVV00312
<b>Alternative Names</b>	BRII 198, BRII-198, BRII198 CAS: 2509447-08-7
<b>Clone ID</b>	Romlusevimab
<b>Host species</b>	Human
<b>Species reactivity</b>	SARS-CoV-2 (2019-nCoV)
<b>Form</b>	Liquid
<b>Storage buffer</b>	0.01M PBS, pH 7.4.
<b>Concentration</b>	1.48 mg/ml
<b>Purity</b>	>95% as determined by SDS-PAGE.
<b>Clonality</b>	Monoclonal
<b>Isotype</b>	IgG1, lambda2
<b>Applications</b>	Research Grade Biosimilar
<b>Target</b>	Spike glycoprotein, S glycoprotein, E2, Peplomer protein, Spike protein S1, Spike protein S2, Spike protein S2', S, 2, Receptor-Binding Domain, RBD
<b>Purification</b>	Protein A/G purified from cell culture supernatant.
<b>Endotoxin level</b>	Please contact with the lab for this information.
<b>Expression system</b>	Mammalian Cells
<b>Accession</b>	P0DTC2-2

## Stability and Storage

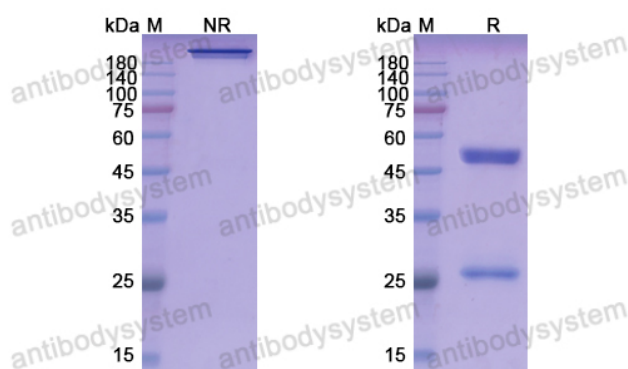
Use a manual defrost freezer and avoid repeated freeze-thaw cycles.

Store at 4°C short term (1-2 weeks). Store at -20°C 12 months. Store at -80°C long term.

## Note

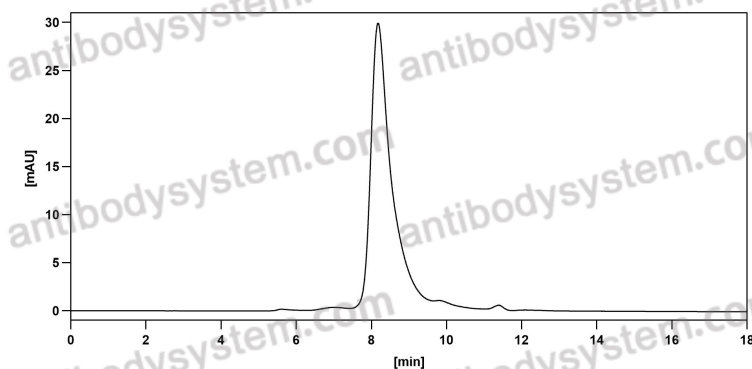
For research use only. Not suitable for clinical or therapeutic use.

## Data Image



SDS PAGE for Romlusevimab

SDS-PAGE



The purity of this product is >95% as determined by SEC-HPLC.

SEC-HPLC