

Research Grade Anselamimab

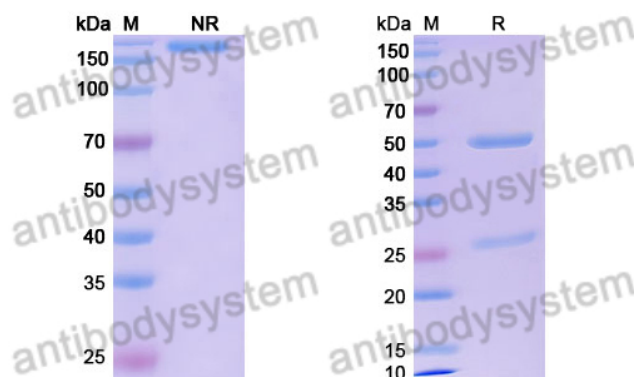
Summary

Catalog No.	DHC65502
Alternative Names	11-1F4, CAEL 101, CAEL-101, NSC-711516 CAS: 2414866-63-8
Clone ID	Anselamimab
Host species	Chimeric
Species reactivity	Human
Form	Liquid
Storage buffer	0.01M PBS, pH 7.4.
Concentration	1.31 mg/ml
Purity	>95% as determined by SDS-PAGE.
Clonality	Monoclonal
Isotype	IgG1-kappa
Applications	Research Grade Biosimilar
Target	SAA, Serum amyloid A-1 protein, SAA1, Amyloid fibril protein AA
Purification	Protein A/G purified from cell culture supernatant.
Endotoxin level	Please contact with the lab for this information.
Expression system	Mammalian Cells
Accession	P0DJI8
Stability and Storage	Use a manual defrost freezer and avoid repeated freeze-thaw cycles. Store at 4°C short term (1-2 weeks). Store at -20°C 12 months. Store at -80°C long term.

Note

For research use only. Not suitable for clinical or therapeutic use.

Data Image



SDS PAGE for Research Grade Anselamimab

SDS-PAGE