

# Anti-Human C1q Complement Polyclonal Antibody, FITC

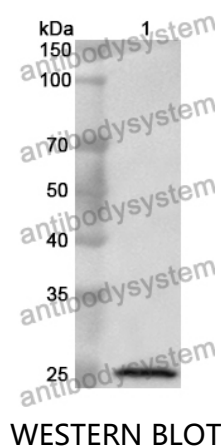
## Summary

---

<b>Catalog No.</b>	PHD01041
<b>Host species</b>	Rabbit
<b>Conjugation</b>	FITC
<b>Species reactivity</b>	Human
<b>Immunogen</b>	E. coli - derived recombinant Human C1q (Ala28-Ala245).
<b>Form</b>	Liquid
<b>Storage buffer</b>	0.01M PBS, pH 7.4, 50% Glycerol, 0.05% Proclin 300.
<b>Clonality</b>	Polyclonal
<b>Isotype</b>	IgG
<b>Applications</b>	ELISA, IF, WB
<b>Target</b>	C1Q, Complement C1q
<b>Purification</b>	Purified by antigen affinity column.
<b>Stability and Storage</b>	Use a manual defrost freezer and avoid repeated freeze thaw cycles. Store at 2 to 8°C for frequent use. Store at -20 to -80°C for twelve months from the date of receipt.
<b>Note</b>	For research use only.

## Data Image

---



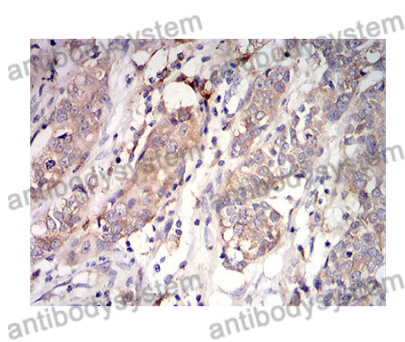
Recombinant Protein lysates were subjected to SDS PAGE followed by western blot with 0 antibody (PHD01041) at 1 µg/ml.

Lane 1: Recombinant protein

Second Ab: Goat Anti-Rabbit IgG H&L Polyclonal antibody, HRP (PTB96431) at 0.1 µg/mL.

Predict MW: 25 kDa

Observed MW: 25 kDa



Immunohistochemical

Immunohistochemical analysis of human bladder cancer stained for C1QA with PHD01041.