

Research Grade Dulaglutide

Summary

Catalog No.	DHE40129
Alternative Names	CAS: 923950-08-7
Clone ID	Dulaglutide
Host species	Human
Species reactivity	Human
Form	Liquid
Storage buffer	0.01M PBS, pH 7.4.
Concentration	0.8 mg/ml
Purity	>95% as determined by SDS-PAGE.
Clonality	Monoclonal
Isotype	Fusion-[GCG (glucagon) 98-127 (glucagon-like peptide 1, GLP1) 7-36]2-IgG4-Fc (Fragment constant)
Applications	Research Grade Biosimilar
Target	GLP-1 receptor, Glucagon-like peptide 1 receptor, GLP1R, GLP-1-R, GLP-1R
Purification	Protein A/G purified from cell culture supernatant.
Endotoxin level	Please contact with the lab for this information.
Expression system	Mammalian Cells
Accession	P43220

Stability and Storage

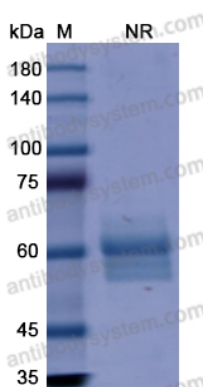
Use a manual defrost freezer and avoid repeated freeze-thaw cycles.

Store at 4°C short term (1-2 weeks). Store at -20°C 12 months. Store at -80°C long term.

Note

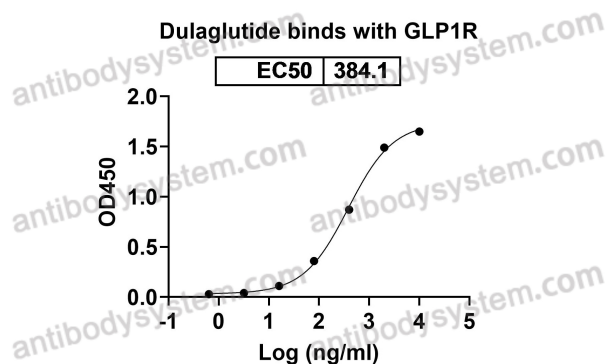
For research use only. Not suitable for clinical or therapeutic use.

Data Image



SDS-PAGE

SDS PAGE for Dulaglutide



Bioactivity

Detects GLP1R in indirect ELISAs.