

Recombinant Human PLA2R1 Protein

Summary

Catalog No.	AID00601
Alternative Names	PLA2R, 180 kDa secretory phospholipase A2 receptor, Secretory phospholipase A2 receptor, PLA2-R, M-type receptor, C-type lectin domain family 13 member C, Soluble PLA2-R, PLA2R1, Soluble PLA2R, CLEC13C
Form	Lyophilized
Storage buffer	Lyophilized from a solution in PBS pH 7.4, 0.02% SKL, 1mM EDTA, 5% Trehalose, 5% Mannitol.
Purity	>95% as determined by SDS-PAGE.
Applications	As a diagnostic tool for Membranous nephropathy (MN).
Endotoxin level	Please contact with the lab for this information.
Expression system	Confidential
Accession	Q13018
Protein length	Confidential
Nature	Recombinant
Stability and Storage	Use a manual defrost freezer and avoid repeated freeze thaw cycles. Store at 2 to 8°C for frequent use. Store at -20 to -80°C for twelve months from the date of receipt.
Reconstitution	Reconstitute in sterile water for a stock solution.
Species	Homo sapiens (Human)

Shipping

In general, proteins are provided as lyophilized powder/frozen liquid. They are shipped out with dry ice/blue ice unless customers require otherwise.

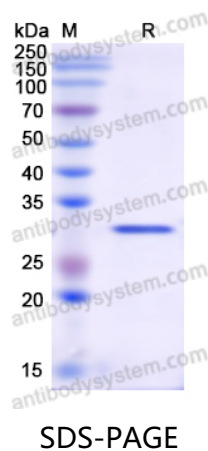
Note

For research use only.

Description

PLA2R1 is a large transmembrane receptor of 180-kDa that belongs to the superfamily of C-type lectins. It was discovered because of its high affinity for secreted phospholipases A2 (sPLA2), enzymes that play a key role in lipid mediator synthesis. Early PLA2R1 physiological roles include the clearance of sPLA2 from the extracellular medium and/or promotion of their actions. Over the last four years, two independent studies suggested that PLA2R1 plays a role in cancer as a tumor gene suppressor and is the major target antigen of auto-immune antibodies involved in idiopathic membranous nephropathy, a severe human kidney disease.

Data Image



SDS PAGE for recombinant Human PLA2R1 protein