

# Recombinant Human Calreticulin/CALR Protein

## Summary

---

<b>Catalog No.</b>	AID00501
<b>Alternative Names</b>	Calreticulin, ERp60, CRTC, Calregulin, grp60, HACBP, Endoplasmic reticulum resident protein 60, CALR, CRP55
<b>Form</b>	Liquid
<b>Storage buffer</b>	0.01M PBS, pH 7.4.
<b>Purity</b>	>95% as determined by SDS-PAGE.
<b>Applications</b>	As a diagnostic tool for Systemic Lupus Erythematosus (SLE).
<b>Endotoxin level</b>	Please contact with the lab for this information.
<b>Expression system</b>	Confidential
<b>Accession</b>	P27797
<b>Protein length</b>	Confidential
<b>Nature</b>	Recombinant
<b>Stability and Storage</b>	Use a manual defrost freezer and avoid repeated freeze thaw cycles. Store at 2 to 8°C for frequent use. Store at -20 to -80°C for twelve months from the date of receipt.
<b>Reconstitution</b>	Reconstitute in sterile water for a stock solution. A copy of datasheet will be provided with the products, please refer to it for details.
<b>Species</b>	Homo sapiens (Human)
<b>Shipping</b>	In general, proteins are provided as lyophilized powder/frozen liquid. They are shipped out with dry ice/blue ice unless customers require otherwise.

**Note**

For research use only.

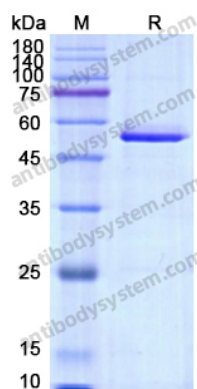
## Description

---

Autoantibodies (Aab) against calreticulin (CRT) have been reported in a number of autoimmune disorders including rheumatoid arthritis, Sjogren's syndrome, celiac disease and complete congenital heart block.

## Data Image

---



SDS-PAGE

SDS PAGE for recombinant Human Calreticulin /  
CALR