

# Research Grade Pelgifatamab

## Summary

---

|                           |   |
|---------------------------|---|
| <b>Catalog No.</b>        | DHG01306  |
| <b>Alternative Names</b>  | BAY-2315497, PSMA-TTC   |
| <b>Clone ID</b>           | Pelgifatamab  |
| <b>Host species</b>       | Human   |
| <b>Species reactivity</b> | Human   |
| <b>Form</b>               | Liquid  |
| <b>Storage buffer</b>     | 0.01M PBS, pH 7.4.  |
| <b>Concentration</b>      | 1 mg/ml   |
| <b>Purity</b>             | >95% as determined by SDS-PAGE.   |
| <b>Clonality</b>          | Monoclonal  |
| <b>Isotype</b>            | IgG1-Kappa  |
| <b>Applications</b>       | Research Grade Biosimilar   |
| <b>Target</b>             | NAALAD1, Prostate-specific membrane antigen, NAALADase I, PSMA, PSM, Pteroylpoly-gamma-glutamate carboxypeptidase, Glutamate carboxypeptidase 2, N-acetylated-alpha-linked acidic dipeptidase I, Glutamate carboxypeptidase II, FOLH1, FGCP, FOLH, Folylpoly-gamma-glutamate carboxypeptidase, Folate hydrolase 1, GCPII, Membrane glutamate carboxypeptidase, Cell growth-inhibiting gene 27 protein, mGCP |
| <b>Purification</b>       | Protein A/G purified from cell culture supernatant.   |
| <b>Endotoxin level</b>    | Please contact with the lab for this information.   |

## Recombinant Proteins &amp; Antibodies

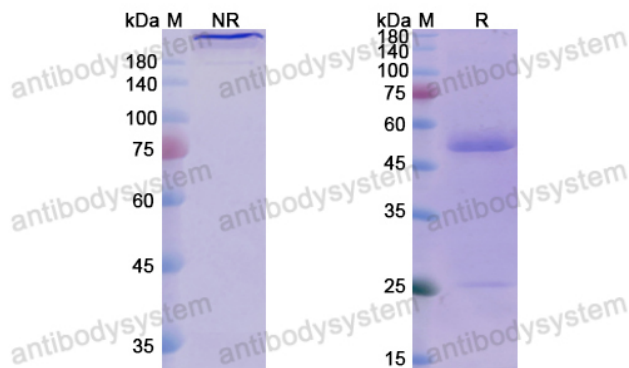
**Expression system** Mammalian Cells

**Accession** Q04609

**Stability and Storage** Use a manual defrost freezer and avoid repeated freeze-thaw cycles.  
Store at 4°C short term (1-2 weeks). Store at -20°C 12 months. Store at -80°C long term.

**Note** For research use only. Not suitable for clinical or therapeutic use.

## Data Image



SDS PAGE for Pelgifatamab

SDS-PAGE