

# SUMO protease/ULP1

## Summary

---

<b>Catalog No.</b>	YXX51101
<b>Form</b>	Liquid
<b>Storage buffer</b>	0.01M PBS, pH 7.4.
<b>Purity</b>	>95% as determined by SDS-PAGE.
<b>Applications</b>	Remove or cleave SUMO tag from the SUMO fusion protein
<b>Target</b>	SUMO protease/ULP1
<b>Endotoxin level</b>	Please contact with the lab for this information.
<b>Expression system</b>	E. coli
<b>Protein length</b>	SUMO protease is cloned from Baker's yeast and expressed in E.coli.
<b>Nature</b>	Recombinant
<b>Predicted molecular weight</b>	27.93 kDa
<b>Stability and Storage</b>	Use a manual defrost freezer and avoid repeated freeze thaw cycles.Store at 2 to 8 °C for one week .Store at -20 to -80 °C for twelve months from the date of receipt.
<b>Reconstitution</b>	Reconstitute in sterile water for a stock solution.A copy of datasheet will be provided with the products, please refer to it for details.
<b>Species</b>	Saccharomyces cerevisiae (strain ATCC 204508 / S288c) (Baker's yeast)
<b>Shipping</b>	In general, proteins are provided as lyophilized powder/frozen liquid. They are shipped out with dry ice/blue ice unless customers require otherwise.
<b>Note</b>	For research use only.

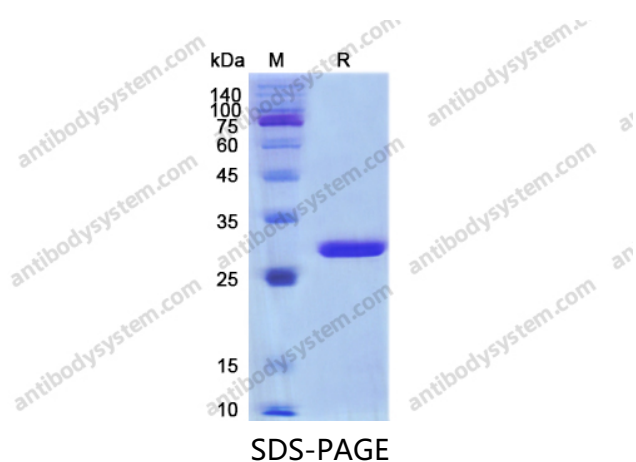
## Description

---

SUMO protease / ULP1 is highly specific for the SUMO protein fusion, recognizing the tertiary structure of SUMO rather than an amino acid sequence.

## Data Image

---



SDS PAGE for recombinant Baker's yeast SUMO protease / ULP1