

## 3C Protease

### Summary

---

<b>Catalog No.</b>	YVV07701
<b>Form</b>	Liquid
<b>Storage buffer</b>	50mM Tris-HCl, pH 8.0, 150mM NaCl, 10mM EDTA, 1mM DTT, 50% glycerol
<b>Concentration</b>	500U/mL
<b>Purity</b>	>95% as determined by SDS-PAGE.
<b>Applications</b>	Remove fusion tags from proteins with the HRV 3C cleavage sequence(LEVLFQ↓GP).
<b>Target</b>	3C Protease
<b>Biological activity</b>	One unit will cleave $\geq 95\%$ of 100 $\mu$ g of GST-tagged protein in 16 hours at 4°C.
<b>Endotoxin level</b>	Please contact with the lab for this information.
<b>Expression system</b>	E.coli
<b>Protein length</b>	3C Protease is cloned from Human rhinovirus and expressed in E.coli.
<b>Nature</b>	Recombinant
<b>Predicted molecular weight</b>	47.46 kDa
<b>Stability and Storage</b>	Use a manual defrost freezer and avoid repeated freeze thaw cycles.Store at 2 to 8 °C for one week .Store at -20 to -80 °C for twelve months from the date of receipt.
<b>Species</b>	HRV-14

**Shipping**

In general, proteins are provided as lyophilized powder/frozen liquid. They are shipped out with dry ice/blue ice unless customers require otherwise.

**Note**

For research use only.

## Description

---

3C protease is a cysteine protease that recognizes the cleavage site of Leu-Glu-Val-Leu-Phe-Gln\*Gly-Pro. It is used to remove fusion tags from proteins with the HRV 3C cleavage sequence and is dual tagged for easy removal from the sample after cleavage.

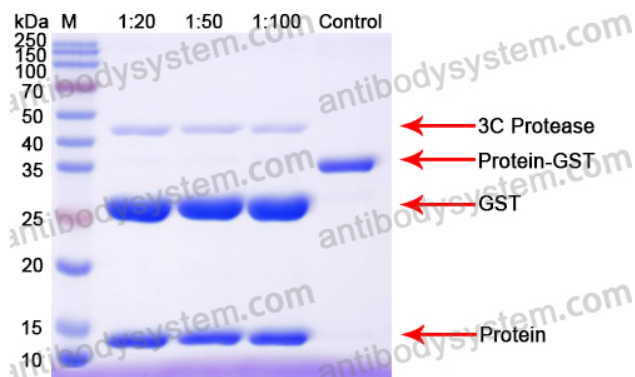
## Data Image

---



SDS PAGE for recombinant HRV-14 3C Protease

## Recombinant Proteins &amp; Antibodies



The control protein was cleaved by 3C protease at 4°C for 16 h.

Experiment Example