

# Research Grade Libivirumab

## Summary

---

|                           |                                                                                                                        |
|---------------------------|------------------------------------------------------------------------------------------------------------------------|
| <b>Catalog No.</b>        | DVV03003                                                                                                               |
| <b>Alternative Names</b>  | 17.1.41, HepeX-B (combination of exbivirumab and libivirumab), CAS: 569658-79-3                                        |
| <b>Clone ID</b>           | Libivirumab                                                                                                            |
| <b>Host species</b>       | Human                                                                                                                  |
| <b>Species reactivity</b> | Hepatitis B virus genotype A (HBV-A)                                                                                   |
| <b>Form</b>               | Liquid                                                                                                                 |
| <b>Storage buffer</b>     | 0.01M PBS, pH 7.4.                                                                                                     |
| <b>Concentration</b>      | 2.4 mg/ml                                                                                                              |
| <b>Purity</b>             | >95% as determined by SDS-PAGE.                                                                                        |
| <b>Clonality</b>          | Monoclonal                                                                                                             |
| <b>Isotype</b>            | IgG1, kappa                                                                                                            |
| <b>Applications</b>       | Research Grade Biosimilar                                                                                              |
| <b>Target</b>             | Large envelope protein, L glycoprotein, L-HBsAg, LHB, Large S protein, Large surface protein, Major surface antigen, S |
| <b>Purification</b>       | Protein A/G purified from cell culture supernatant.                                                                    |
| <b>Endotoxin level</b>    | Please contact with the lab for this information.                                                                      |
| <b>Expression system</b>  | Mammalian Cells                                                                                                        |
| <b>Accession</b>          | P03142                                                                                                                 |

### Stability and Storage

Use a manual defrost freezer and avoid repeated freeze-thaw cycles.

Store at 4°C short term (1-2 weeks). Store at -20°C 12 months. Store at -80°C long term.

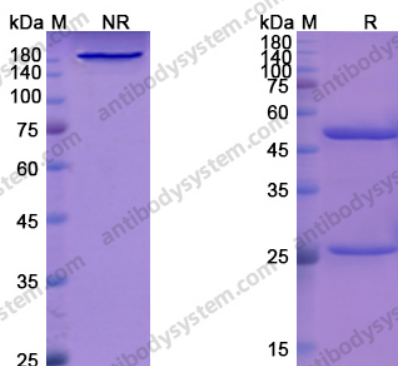
### Note

For research use only. Not suitable for clinical or therapeutic use.

## Description

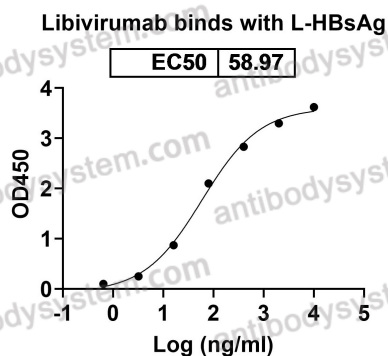
Libivirumab is a human monoclonal antibody directed against the hepatitis B virus. libivirumab had an IC<sub>50</sub> of 35 and 128 ng/ml in the neutralization assays based on ELISA and immunofluorescence assays.

## Data Image



SDS-PAGE

SDS PAGE for Libivirumab



Bioactivity

Detects S/L-HBsAg/L glycoprotein in indirect ELISAs.