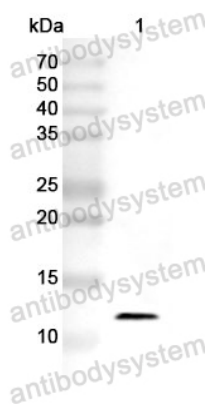


Anti-S100A12 Polyclonal Antibody

Summary

Catalog No.	PHF71601
Host species	Rabbit
Tested applications	ELISA: 1:4000-1:8000, IHC: 1:50-1:100, WB: 1:1000-1:4000
Species reactivity	Human
Immunogen	E. coli - derived recombinant Human S100A12 (Met1-Glu92).
Form	Liquid
Storage buffer	0.01M PBS, pH 7.4, 50% Glycerol, 0.05% Proclin 300.
Clonality	Polyclonal
Isotype	IgG
Applications	ELISA, IHC, WB
Target	Migration inhibitory factor-related protein 6,MRP-6,Extracellular newly identified RAGE-binding protein,p6,Calcium-binding protein in amniotic fluid 1,Calgranulin-C,Protein S100-A12,CGRP,S100 calcium-binding protein A12,Neutrophil S100 protein,CAAF1,EN-RAGE,S100A12,CAGC
Purification	Purified by antigen affinity column.
Accession	P80511
Stability and Storage	Use a manual defrost freezer and avoid repeated freeze thaw cycles. Store at 2 to 8°C for frequent use. Store at -20 to -80°C for twelve months from the date of receipt.
Note	For research use only.

Data Image



Western Blot

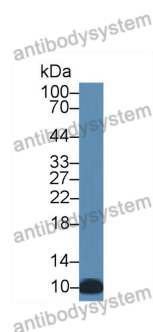
Recombinant Protein lysates were subjected to SDS PAGE followed by western blot with S100A12 antibody (PHF71601) at 1 µg/ml.

Lane 1: Recombinant protein

Second Ab: Goat Anti-Rabbit IgG H&L Polyclonal antibody, HRP (PTB96431) at 0.1 µg/mL.

Predict MW: 13 kDa

Observed MW: 13 kDa



Western Blot

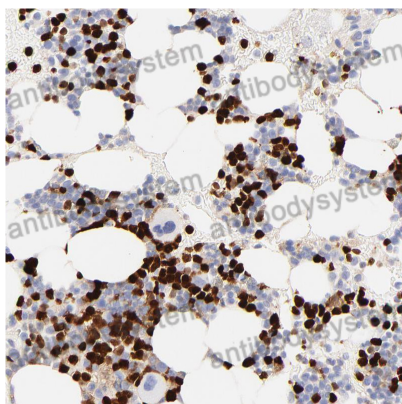
Various lysates were subjected to SDS PAGE followed by western blot with S100A12 antibody (PHF71601) at 1 µg/ml.

Lane 1: Human leukocyte

Second Ab: Goat Anti-Rabbit IgG H&L Polyclonal antibody, HRP (PTB96431) at 0.1 µg/mL.

Predict MW: 10 kDa

Observed MW: 10 kDa



Immunohistochemical

Immunohistochemical analysis of human bone marrow stained for S100A12 with PHF71601.