

Anti-HSD11B2 Polyclonal Antibody

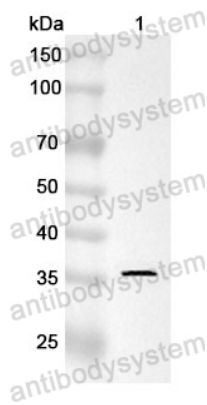
Summary

Catalog No.	PHF71301
Host species	Rabbit
Tested applications	ELISA: 1:4000-1:8000, IHC: 1:50-1:100, WB: 1:1000-1:4000
Species reactivity	Human, Mouse, Rat
Immunogen	E. coli - derived recombinant Human HSD11B2 (Gly106-Arg405).
Form	Liquid
Storage buffer	0.01M PBS, pH 7.4, 50% Glycerol, 0.05% Proclin 300.
Clonality	Polyclonal
Isotype	IgG
Applications	ELISA, IHC, WB
Target	HSD11B2,11-beta-HSD type II,11-beta-HSD,11-DH2,Short chain dehydrogenase/reductase family 9C member 3,Corticosteroid 11-beta-dehydrogenase isozyme 2,SDR9C3,NAD-dependent 11-beta-hydroxysteroid dehydrogenase,11-beta-hydroxysteroid dehydrogenase type II,11-beta-hydroxysteroid dehydrogenase type 2,11-beta-HSD2,HSD11K,11-HSD type II
Purification	Purified by antigen affinity column.
Accession	P80365
Stability and Storage	Use a manual defrost freezer and avoid repeated freeze thaw cycles. Store at 2 to 8°C for frequent use. Store at -20 to -80°C for twelve months from the date of receipt.

Note

For research use only.

Data Image

**Western Blot**

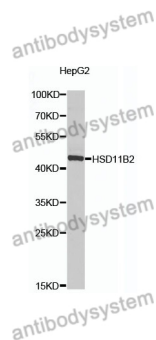
Recombinant Protein lysates were subjected to SDS PAGE followed by western blot with HSD11B2 antibody (PHF71301) at 1 µg/ml.

Lane 1: Recombinant protein

Second Ab: Goat Anti-Rabbit IgG H&L Polyclonal antibody, HRP (PTB96431) at 0.1 µg/mL.

Predict MW: 35 kDa

Observed MW: 35 kDa

**Western Blot**

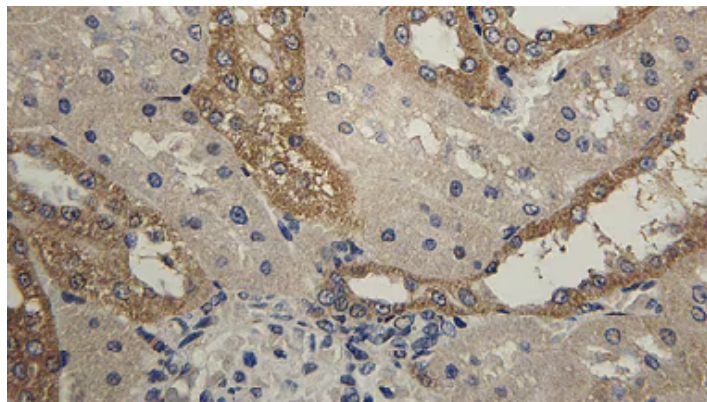
Various lysates were subjected to SDS PAGE followed by western blot with HSD11B2 antibody (PHF71301) at 1 µg/ml.

Lane 1: HepG2

Second Ab: Goat Anti-Rabbit IgG H&L Polyclonal antibody, HRP (PTB96431) at 0.1 µg/mL.

Predict MW: 44 kDa

Observed MW: 44 kDa



Immunohistochemical analysis of rat kidney stained for HSD11B2 with PHF71301.

Immunohistochemical