

Anti-CD172a/SIRPA Polyclonal Antibody

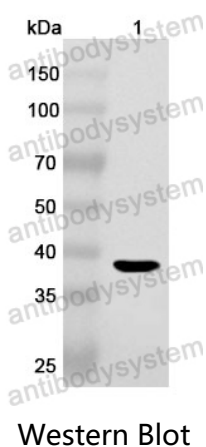
Summary

Catalog No.	PHF64001
Host species	Rabbit
Tested applications	ELISA: 1:4000-1:8000, IHC: 1:50-1:100, WB: 1:1000-1:4000
Species reactivity	Human
Immunogen	E. coli - derived recombinant Human CD172a/SIRPA (Glu31-Arg370).
Form	Liquid
Storage buffer	0.01M PBS, pH 7.4, 50% Glycerol, 0.05% Proclin 300.
Clonality	Polyclonal
Isotype	IgG
Applications	ELISA, IHC, WB
Target	BIT,Signal-regulatory protein alpha-1,Brain Ig-like molecule with tyrosine-based activation motifs,MFR,SIRP,Sirp-alpha-1,Sirp-alpha-2,PTPNS1,SIRPA,SHP substrate 1,CD172 antigen-like family member A,Sirp-alpha-3,Inhibitory receptor SHPS-1,Signal-regulatory protein alpha-3,CD172a,Tyrosine-protein phosphatase non-receptor type substrate 1,MyD-1 antigen,Bit,SHPS-1,Macrophage fusion receptor,Signal-regulatory protein alpha-2,SHPS1,MYD1,p84
Purification	Purified by antigen affinity column.
Accession	P78324
Stability and Storage	Use a manual defrost freezer and avoid repeated freeze thaw cycles. Store at 2 to 8°C for frequent use. Store at -20 to -80°C for twelve months from the date of receipt.

Note

For research use only.

Data Image



Recombinant Protein lysates were subjected to SDS PAGE followed by western blot with CD172a/SIRPA antibody (PHF64001) at 1 µg/ml.

Lane 1: Recombinant protein

Second Ab: Goat Anti-Rabbit IgG H&L Polyclonal antibody, HRP (PTB96431) at 0.1 µg/mL.

Predict MW: 40 kDa

Observed MW: 40 kDa