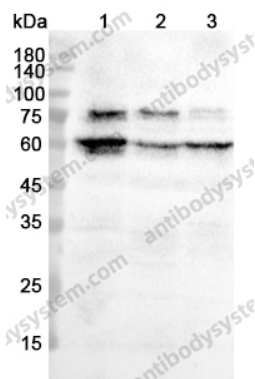


Anti-S6K1/RPS6KB1 Polyclonal Antibody

Summary

Catalog No.	PHD57801
Host species	Rabbit
Tested applications	ELISA: 1:4000-1:8000, IHC: 1:50-1:100, WB: 1:1000-1:4000
Species reactivity	Human, Mouse, Rat
Immunogen	E. coli - derived recombinant Human S6K1/RPS6KB1 (Phe91-Phe352).
Form	Liquid
Storage buffer	0.01M PBS, pH 7.4, 50% Glycerol, 0.05% Proclin 300.
Clonality	Polyclonal
Isotype	IgG
Applications	ELISA, IHC, WB
Target	S6K-beta-1,70 kDa ribosomal protein S6 kinase 1,p70 S6KA,p70-S6K 1,S6K1,Serine/threonine-protein kinase 14A,p70 ribosomal S6 kinase alpha,p70 S6 kinase alpha,STK14A,RPS6KB1,Ribosomal protein S6 kinase I,p70 S6K-alpha,P70S6K1,Ribosomal protein S6 kinase beta-1
Purification	Purified by antigen affinity column.
Accession	P23443
Stability and Storage	Use a manual defrost freezer and avoid repeated freeze thaw cycles. Store at 2 to 8°C for frequent use. Store at -20 to -80°C for twelve months from the date of receipt.
Note	For research use only.

Data Image



Western blot

Various lysates were subjected to SDS PAGE followed by western blot with S6K antibody (PHD57801) at 0.53ug/ml.

Lane 1: 293T cell lysate

Lane 2: HuH-7 cell lysate

Lane 3: SH-SY5Y cell lysate

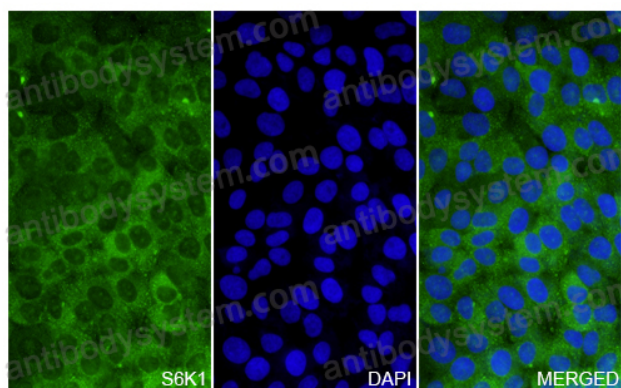
Second Ab: Goat Anti-Rabbit IgG H&L Polyclonal antibody, HRP (PTB96431) at 0.1 µg/mL.

Predict MW: 59 kDa

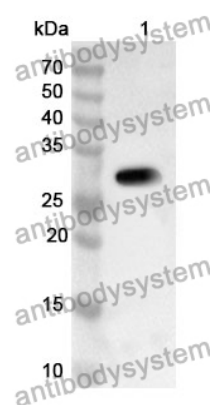
Observed MW: 60,75 kDa

S6K1 / RPS6KB1 in HepG2 Cell Line.

The HepG2 cells were fixed with 4% paraformaldehyde (20 min), and then blocked with 5% goat serum for 1h. And the cells were incubated for 2h at 37°C with S6K1 / RPS6KB1 (PHD57801) at 10.6 µg/ml. The section was then incubated with Goat Anti-Rabbit IgG (Alexa Fluor-488) preabsorbed at 1/100 dilution (Shown in green) for 1 hour at room temperature. Nuclear DNA was labelled with DAPI (shown in blue).



Immunocytochemistry/ Immunofluorescence



Western Blot

Recombinant Protein lysates were subjected to SDS PAGE followed by western blot with S6K1/RPS6KB1 antibody (PHD57801) at 1 µg/ml.

Lane 1: Recombinant Protein

Second Ab: Goat Anti-Rabbit IgG H&L Polyclonal antibody, HRP (PTB96431) at 0.1 µg/mL.

Predict MW: 32 kDa

Observed MW: 32 kDa