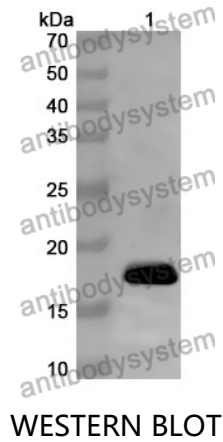


Anti-ALOX15 Polyclonal Antibody

Summary

Catalog No.	PHD14601
Host species	Rabbit
Tested applications	ELISA: 1:4000-1:8000, IHC: 1:50-1:100, WB: 1:1000-1:4000
Species reactivity	Human
Immunogen	E. coli - derived recombinant Human ALOX15 (Lys170-Leu312).
Form	Liquid
Storage buffer	0.01M PBS, pH 7.4, 50% Glycerol, 0.05% Proclin 300.
Clonality	Polyclonal
Isotype	IgG
Applications	ELISA, IHC, WB
Target	Arachidonate omega-6 lipoxygenase,Arachidonate 12-lipoxygenase,leukocyte-type,Hepoxilin A3 synthase Alox15,12-LOX,15-LOX-1,15-LOX,Arachidonate 15-lipoxygenase,Polyunsaturated fatty acid lipoxygenase ALOX15,12/15-lipoxygenase,Linoleate 13S-lipoxygenase,LOG15,ALOX15
Purification	Purified by antigen affinity column.
Accession	P16050
Stability and Storage	Use a manual defrost freezer and avoid repeated freeze thaw cycles. Store at 2 to 8°C for frequent use. Store at -20 to -80°C for twelve months from the date of receipt.
Note	For research use only.

Data Image



Recombinant Protein lysates were subjected to SDS PAGE followed by western blot with ALOX15 antibody (PHD14601) at 1 $\mu\text{g/ml}$.

Lane 1: Recombinant protein

Second Ab: Goat Anti-Rabbit IgG H&L Polyclonal antibody, HRP (PTB96431) at 0.1 $\mu\text{g/mL}$.

Predict MW: 18 kDa

Observed MW: 18 kDa