

# Anti-XRCC5/Ku80 Polyclonal Antibody

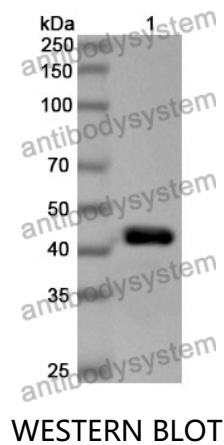
## Summary

---

<b>Catalog No.</b>	PHC96101
<b>Host species</b>	Rabbit
<b>Tested applications</b>	ELISA: 1:4000-1:8000, IHC: 1:50-1:100, WB: 1:1000-1:4000
<b>Species reactivity</b>	Human
<b>Immunogen</b>	E. coli - derived recombinant Human XRCC5/Ku80 (Leu384-Ile732).
<b>Form</b>	Liquid
<b>Storage buffer</b>	0.01M PBS, pH 7.4, 50% Glycerol, 0.05% Proclin 300.
<b>Clonality</b>	Polyclonal
<b>Isotype</b>	IgG
<b>Applications</b>	ELISA, IHC, WB
<b>Target</b>	Lupus Ku autoantigen protein p86,XRCC5,Thyroid-lupus autoantigen,Ku86,ATP-dependent DNA helicase 2 subunit 2,CTC85,G22P2,DNA repair protein XRCC5,86 kDa subunit of Ku antigen,TLAA,Nuclear factor IV,CTC box-binding factor 85 kDa subunit,ATP-dependent DNA helicase II 80 kDa subunit,CTCBF,Ku80,X-ray repair complementing defective repair in Chinese hamster cells 5 (double-strand-break rejoining),X-ray repair cross-complementing protein 5
<b>Purification</b>	Purified by antigen affinity column.
<b>Accession</b>	P13010
<b>Stability and Storage</b>	Use a manual defrost freezer and avoid repeated freeze thaw cycles. Store at 2 to 8°C for frequent use. Store at -20 to -80°C for twelve months from the date of receipt.

Note For research use only.

## Data Image



Recombinant Protein lysates were subjected to SDS PAGE followed by western blot with XRCC5/Ku80 antibody (PHC96101) at 1  $\mu\text{g/ml}$ .

Lane 1: Recombinant protein

Second Ab: Goat Anti-Rabbit IgG H&L Polyclonal antibody, HRP (PTB96431) at 0.1  $\mu\text{g/mL}$ .

Predict MW: 42 kDa

Observed MW: 42 kDa