

Research Grade Panitumumab

Summary

Catalog No.	DHB86903
Alternative Names	ABX-EGF, E7.6.3, CAS: 339177-26-3
Clone ID	Panitumumab
Host species	Human
Species reactivity	Human
Form	Liquid
Storage buffer	0.01M PBS, pH 7.4.
Concentration	8.58 mg/ml
Purity	>95% as determined by SDS-PAGE.
Clonality	Monoclonal
Isotype	IgG2-kappa
Applications	Research Grade Biosimilar
Target	HER1, Receptor tyrosine-protein kinase erbB-1, Proto-oncogene c-ErbB-1, Epidermal growth factor receptor, EGFR, ERBB1, ERBB
Purification	Protein A/G purified from cell culture supernatant.
Endotoxin level	Please contact with the lab for this information.
Expression system	Mammalian Cells
Accession	P00533

Stability and Storage

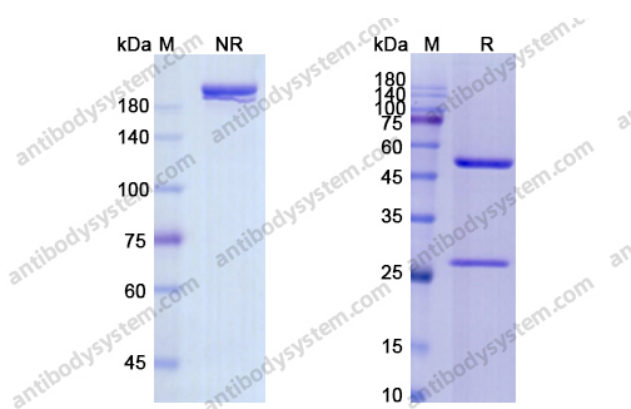
Use a manual defrost freezer and avoid repeated freeze-thaw cycles.

Store at 4°C short term (1-2 weeks). Store at -20°C 12 months. Store at -80°C long term.

Note

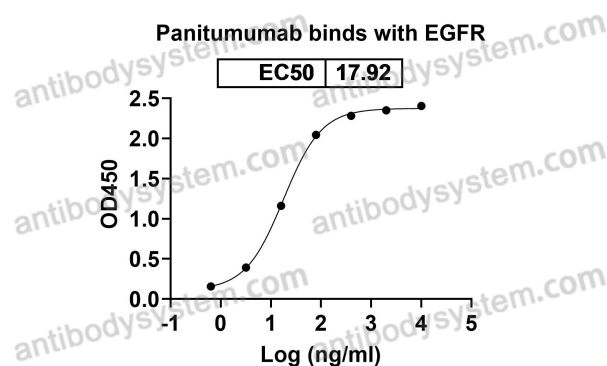
For research use only. Not suitable for clinical or therapeutic use.

Data Image



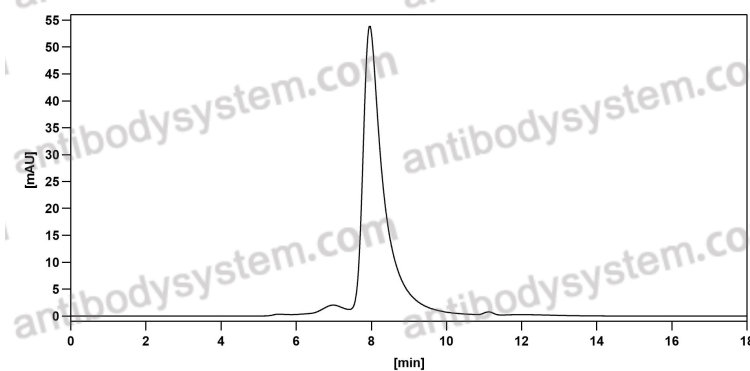
SDS PAGE for Panitumumab

SDS-PAGE



Detects EGFR/ERBB1/HER1 in indirect ELISAs.

Bioactivity



The purity of this product is >95% as determined by SEC-HPLC.

SEC-HPLC