

Research Grade Capromab

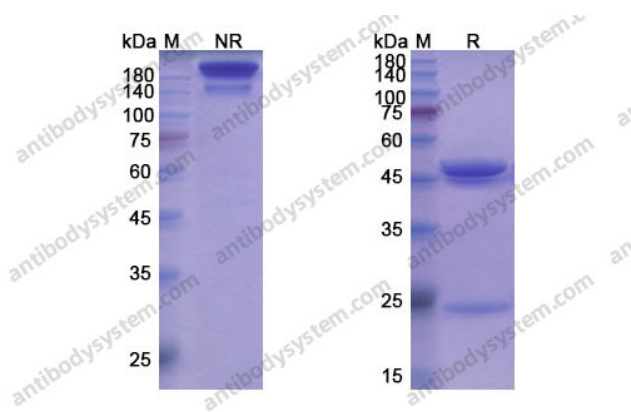
Summary

| | |
|---------------------------|---|
| Catalog No. | DHG01303 |
| Alternative Names | 7E11-C5.3 radiolabelled, Indium In1111 ProstaScint, capromab pendetide, CAS: 145464-28-4 |
| Clone ID | Capromab |
| Host species | Mouse |
| Species reactivity | Human |
| Form | Liquid |
| Storage buffer | 0.01M PBS, pH 7.4. |
| Concentration | 1 mg/ml |
| Purity | >95% as determined by SDS-PAGE. |
| Clonality | Monoclonal |
| Isotype | IgG1-kappa |
| Applications | Research Grade Biosimilar |
| Target | NAALAD1, Prostate-specific membrane antigen, NAALADase I, PSMA, PSM, Pteroylpoly-gamma-glutamate carboxypeptidase, Glutamate carboxypeptidase 2, N-acetylated-alpha-linked acidic dipeptidase I, Glutamate carboxypeptidase II, FOLH1, FGCP, FOLH, Folylpoly-gamma-glutamate carboxypeptidase, Folate hydrolase 1, GCPII, Membrane glutamate carboxypeptidase, Cell growth-inhibiting gene 27 protein, mGCP |
| Purification | Protein A/G purified from cell culture supernatant. |

Recombinant Proteins & Antibodies

| | |
|------------------------------|---|
| Endotoxin level | Please contact with the lab for this information. |
| Expression system | Mammalian Cells |
| Accession | Q04609 |
| Stability and Storage | Use a manual defrost freezer and avoid repeated freeze-thaw cycles. Store at 4°C short term (1-2 weeks). Store at -20°C 12 months. Store at -80°C long term. |
| Note | For research use only. Not suitable for clinical or therapeutic use. |

Data Image



SDS-PAGE

SDS PAGE for Capromab