

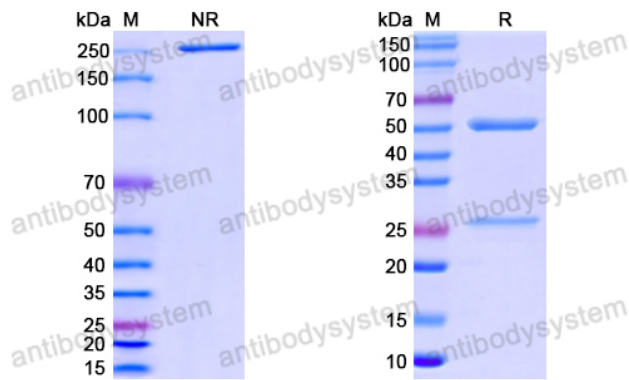
Anti-SARS-CoV-2 RBD antibody (1B6)

Summary

| | |
|------------------------------|---|
| Catalog No. | RVV00311 |
| Clone ID | 1B6 |
| Host species | Human |
| Species reactivity | SARS-CoV-2 (2019-nCoV) |
| Form | Liquid |
| Storage buffer | 0.01M PBS, pH 7.4. |
| Concentration | 1 mg/ml |
| Purity | >95% as determined by SDS-PAGE. |
| Clonality | Monoclonal |
| Isotype | IgG1, kappa |
| Applications | ELISA, WB |
| Target | Spike glycoprotein,S glycoprotein,E2,Peplomer protein,Spike protein S1,S,Receptor-Binding Domain,RBD |
| Purification | Protein A/G purified from cell culture supernatant. |
| Endotoxin level | Please contact with the lab for this information. |
| Expression system | Mammalian Cells |
| Accession | P0DTC2 |
| Stability and Storage | Use a manual defrost freezer and avoid repeated freeze-thaw cycles. Store at 4°C short term (1-2 weeks). Store at -20°C 12 months. Store at - 80°C long term. |

Note For research use only.

Data Image



SDS-PAGE

SDS PAGE for Anti-SARS2 RBD Antibody(R3P1-B6)