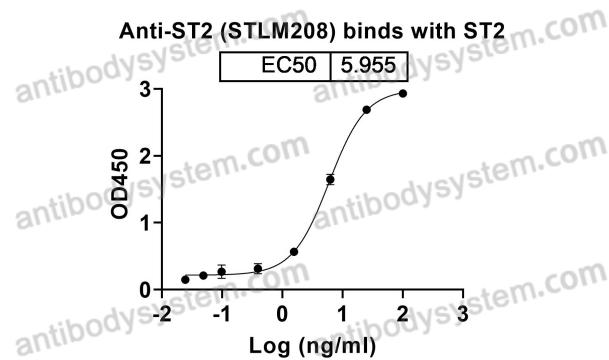


Anti-Human IL1RL1/ST2 antibody (STLM208)

Summary

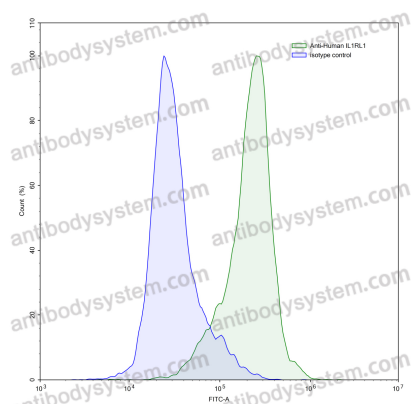
Catalog No.	RHF88303
Clone ID	STLM208
Host species	Human
Species reactivity	Human
Form	Liquid
Storage buffer	0.01M PBS, pH 7.4.
Concentration	1 mg/ml
Purity	>95% as determined by SDS-PAGE.
Clonality	Monoclonal
Isotype	IgG1
Applications	ELISA, FCM, WB
Target	T1,DER4,Interleukin-1 receptor-like 1,ST2,IL1RL1,Protein ST2
Purification	Protein A/G purified from cell culture supernatant.
Endotoxin level	Please contact with the lab for this information.
Expression system	Mammalian Cells
Accession	Q01638
Stability and Storage	Use a manual defrost freezer and avoid repeated freeze-thaw cycles. Store at 4°C short term (1-2 weeks). Store at -20°C 12 months. Store at -80°C long term.
Note	For research use only.

Data Image



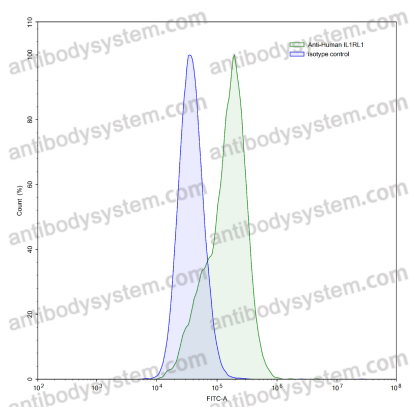
Bioactivity

Detects IL1RL1/ST2 in indirect ELISAs.



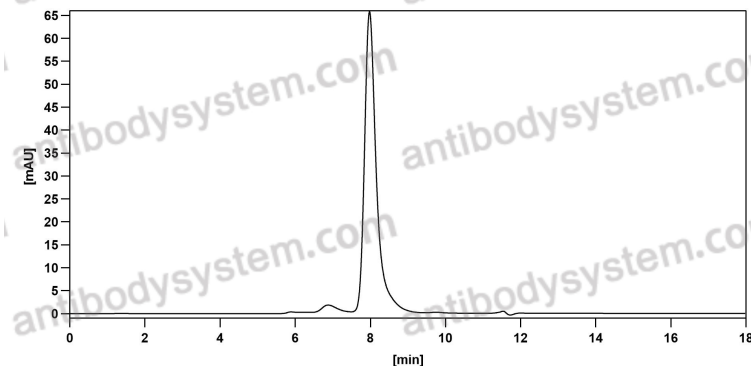
Flow-cytometry

Flow-cytometry using anti-human IL1RL1 antibody.KG-1 cells were stained with an irrelevant antibody (Blue Histogram) or an anti-human IL1RL1 antibody monoclonal antibody (Catalog # RHF88303 ,Green Histogram) at a concentration of 5 µg/ml for 30 mins at RT. After washing, bound antibody was detected using a FITC conjugated goat anti-human antibody (Catalog # PHB96441) and cells analysed on a NovoCyte Flow Cytometer.



Flow-cytometry

Flow-cytometry using anti-human IL1RL1 antibody. HUVEC cells were stained with an irrelevant antibody (Blue Histogram) or an anti-human IL1RL1 antibody monoclonal antibody (Catalog # RHF88303, Green Histogram) at a concentration of 5 µg/ml for 30 mins at RT. After washing, bound antibody was detected using a FITC conjugated goat anti-human antibody (Catalog # PHB96441) and cells analysed on a NovoCyt Flow Cytometer.



SEC-HPLC

The purity of this product is >95% as determined by SEC-HPLC.