

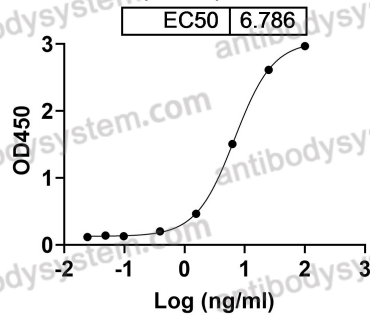
Anti-Human IL1RL1/ST2 antibody (C2244)

Summary

Catalog No.	RHF88302
Clone ID	C2244
Host species	Human
Species reactivity	Human
Form	Liquid
Storage buffer	0.01M PBS, pH 7.4.
Concentration	1 mg/ml
Purity	>95% as determined by SDS-PAGE.
Clonality	Monoclonal
Isotype	IgG1
Applications	ELISA, WB
Target	T1,DER4,Interleukin-1 receptor-like 1,ST2,IL1RL1,Protein ST2
Purification	Protein A/G purified from cell culture supernatant.
Endotoxin level	Please contact with the lab for this information.
Expression system	Mammalian Cells
Accession	Q01638
Stability and Storage	Use a manual defrost freezer and avoid repeated freeze-thaw cycles. Store at 4°C short term (1-2 weeks). Store at -20°C 12 months. Store at -80°C long term.
Note	For research use only.

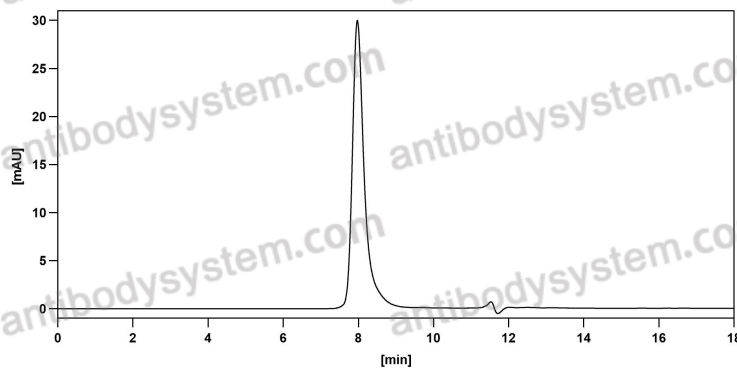
Data Image

Anti-ST2 (C2244) binds with ST2



Detects IL1RL1/ST2 in indirect ELISAs.

Bioactivity



The purity of this product is >95% as determined by SEC-HPLC.

SEC-HPLC