

# Research Grade Anti-Human CD227/MUC1 antibody (CMB-401)

## Summary

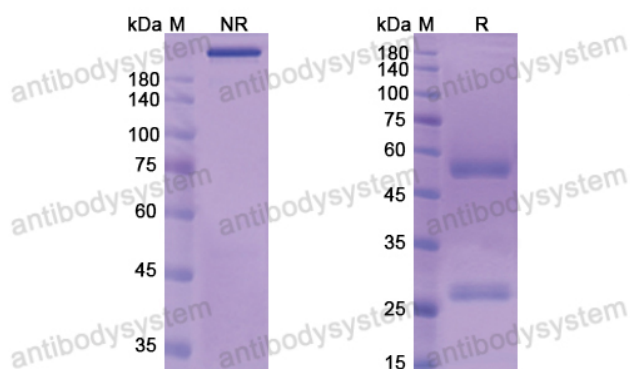
---

<b>Catalog No.</b>	RHD14202
<b>Alternative Names</b>	CMB-401, CMB401, CMB 401
<b>Clone ID</b>	CMB-401
<b>Host species</b>	Human
<b>Species reactivity</b>	Human
<b>Form</b>	Liquid
<b>Storage buffer</b>	0.01M PBS, pH 7.4.
<b>Concentration</b>	1 mg/ml
<b>Purity</b>	>95% as determined by SDS-PAGE.
<b>Clonality</b>	Monoclonal
<b>Isotype</b>	IgG1-nd
<b>Applications</b>	Research Grade Biosimilar
<b>Target</b>	PEMT, CA 15-3, H23AG, Peanut-reactive urinary mucin, PEM, EMA, Cancer antigen 15-3, MUC-1, Episialin, MUC1-CT, MUC1-beta, Tumor-associated mucin, CD227, Polymorphic epithelial mucin, KL-6, MUC1-alpha, MUC1, PUM, Krebs von den Lungen-6, MUC1-NT, Tumor-associated epithelial membrane antigen, Mucin-1, Breast carcinoma-associated antigen DF3, Carcinoma-associated mucin
<b>Purification</b>	Protein A/G purified from cell culture supernatant.

## Recombinant Proteins &amp; Antibodies

Endotoxin level	Please contact with the lab for this information.
Expression system	Mammalian Cells
Accession	P15941
Stability and Storage	Use a manual defrost freezer and avoid repeated freeze-thaw cycles. Store at 4°C short term (1-2 weeks). Store at -20°C 12 months. Store at -80°C long term.
Note	For research use only.

## Data Image



SDS PAGE for CD227 / MUC1

SDS-PAGE