

# Anti-Human FGF19 Antibody (SAA1435)

## Summary

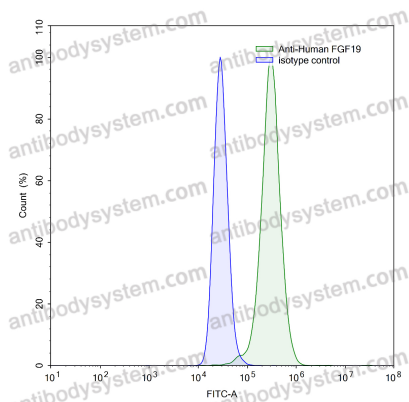
---

<b>Catalog No.</b>	RHB73301
<b>Clone ID</b>	SAA1435
<b>Host species</b>	Human
<b>Tested applications</b>	ELISA: 1:4000-1:8000, IHC: 1:50-1:100, WB: 1:500-1:4000
<b>Species reactivity</b>	Human
<b>Form</b>	Liquid
<b>Storage buffer</b>	0.01M PBS, pH 7.4.
<b>Concentration</b>	0.84 mg/ml
<b>Purity</b>	>95% as determined by SDS-PAGE.
<b>Clonality</b>	Monoclonal
<b>Isotype</b>	IgG1
<b>Applications</b>	ELISA, FCM, IHC, WB
<b>Target</b>	FGF19,Fibroblast growth factor 19,FGF-19
<b>Purification</b>	Protein A/G purified from cell culture supernatant.
<b>Endotoxin level</b>	Please contact with the lab for this information.
<b>Expression system</b>	Mammalian Cells
<b>Accession</b>	O95750
<b>Stability and Storage</b>	Use a manual defrost freezer and avoid repeated freeze-thaw cycles. Store at 4°C short term (1-2 weeks). Store at -20°C 12 months. Store at -80°C long term.

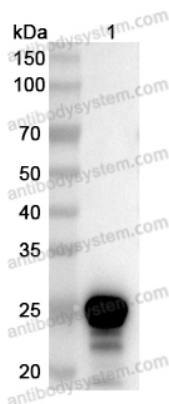
**Note**

For research use only.

## Data Image



Flow-cytometry



WESTERN BLOT

Flow-cytometry using anti-human FGF19 antibody. HT-29 cells were stained with an irrelevant antibody (Blue Histogram) or an anti-human FGF19 antibody monoclonal antibody (Catalog # RHB73301, Green Histogram) at a concentration of 5 µg/ml for 30 mins at RT. After washing, bound antibody was detected using a FITC conjugated goat anti-human antibody (Catalog # PHB96441) and cells analysed on a NovoCyte Flow Cytometer.

Recombinant Protein lysates were subjected to SDS PAGE followed by western blot with FGF19 antibody (RHB73301) at 1 µg/ml.

Lane 1: Recombinant Human FGF19 Protein

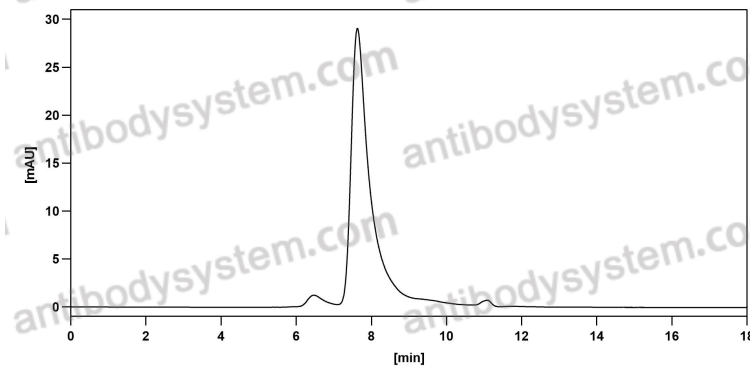
Second Ab: Goat Anti-Human IgG H&L Polyclonal antibody, HRP (PHB96431) at 0.1 µg/mL.

Predict MW: 24 kDa

Observed MW: 24 kDa



## Recombinant Proteins & Antibodies



The purity of this product is >95% as determined by SEC-HPLC.

SEC-HPLC