

Recombinant Human CD172a/SIRPA Protein, C-His

Summary

Catalog No.	EHF64001
Alternative Names	BIT, Signal-regulatory protein alpha-1, Brain Ig-like molecule with tyrosine-based activation motifs, MFR, SIRP, Sirp-alpha-1, Sirp-alpha-2, PTPNS1, SIRPA, SHP substrate 1, CD172 antigen-like family member A, Sirp-alpha-3, Inhibitory receptor SHPS-1, Signal-regulatory protein alpha-3, CD172a, Tyrosine-protein phosphatase non-receptor type substrate 1, MyD-1 antigen, Bit, SHPS-1, Macrophage fusion receptor, Signal-regulatory protein alpha-2, SHPS1, MYD1, p84
Form	Lyophilized
Storage buffer	Lyophilized from a solution in PBS pH 7.4, 1mM EDTA, 4% Trehalose, 1% Mannitol.
Purity	>90% as determined by SDS-PAGE.
Applications	ELISA, Immunogen, SDS-PAGE, WB, Bioactivity testing in progress
Endotoxin level	Please contact with the lab for this information.
Expression system	Mammalian Cells
Accession	P78324
Protein length	Met1-Arg370
Nature	Recombinant
Predicted molecular weight	41.14 kDa
Stability and Storage	Use a manual defrost freezer and avoid repeated freeze thaw cycles. Store at 2 to 8°C for frequent use. Store at -20 to -80°C for twelve months from the date of receipt.

Recombinant Proteins & Antibodies

Reconstitution

Reconstitute in sterile water for a stock solution. A copy of datasheet will be provided with the products, please refer to it for details.

Species

Homo sapiens (Human)

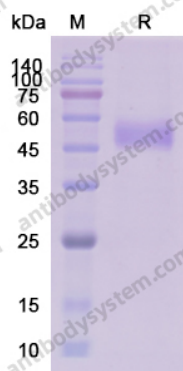
Shipping

In general, proteins are provided as lyophilized powder/frozen liquid. They are shipped out with dry ice/blue ice unless customers require otherwise.

Note

For research use only.

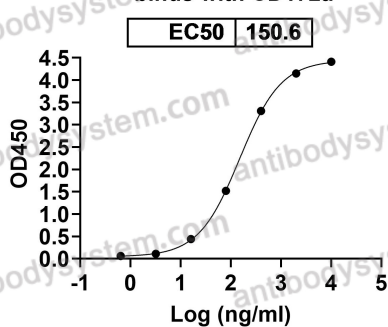
Data Image



SDS-PAGE

SDS PAGE for recombinant Human CD172a / SIRPA

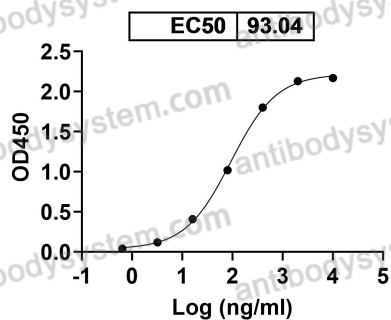
Anti-Human SIRP α / SIRPA Antibody (Kwar23)
binds with CD172a



Bioactivity

Detects Human SIRP α / γ Antibody in indirect ELISAs.

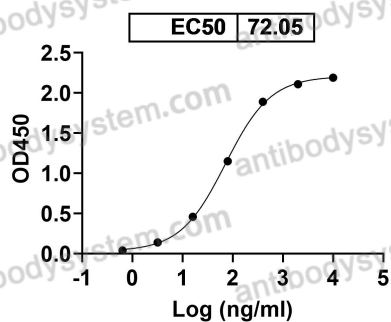
Anti-Human CD172a/SIRPA Antibody (18D5)
binds with CD172a



Bioactivity

Detects Human CD172a/SIRPA Antibody (18D5) in indirect ELISAs.

Anti-Human CD172a/SIRPA Antibody (SAA1393)
binds with CD172a



Bioactivity

Detects Human CD172a/SIRPA Antibody (SAA1393) in indirect ELISAs.