

# Recombinant Human CD172a/SIRPA Protein, N-His

## Summary

---

|                                   |   |
|-----------------------------------|---|
| <b>Catalog No.</b>                | YHF64001  |
| <b>Alternative Names</b>          | BIT, Signal-regulatory protein alpha-1, Brain Ig-like molecule with tyrosine-based activation motifs, MFR, SIRP, Sirp-alpha-1, Sirp-alpha-2, PTPNS1, SIRPA, SHP substrate 1, CD172 antigen-like family member A, Sirp-alpha-3, Inhibitory receptor SHPS-1, Signal-regulatory protein alpha-3, CD172a, Tyrosine-protein phosphatase non-receptor type substrate 1, MyD-1 antigen, Bit, SHPS-1, Macrophage fusion receptor, Signal-regulatory protein alpha-2, SHPS1, MYD1, p84 |
| <b>Form</b>                       | Lyophilized   |
| <b>Storage buffer</b>             | Lyophilized from a solution in PBS pH 7.4, 0.02% NLS, 1mM EDTA, 4% Trehalose, 1% Mannitol.  |
| <b>Purity</b>                     | >90% as determined by SDS-PAGE.   |
| <b>Applications</b>               | ELISA, Immunogen, SDS-PAGE, WB, Bioactivity testing in progress   |
| <b>Endotoxin level</b>            | Please contact with the lab for this information.   |
| <b>Expression system</b>          | E. coli   |
| <b>Accession</b>                  | P78324  |
| <b>Protein length</b>             | Glu31-Arg370  |
| <b>Nature</b>                     | Recombinant   |
| <b>Predicted molecular weight</b> | 39.62 kDa   |
| <b>Stability and Storage</b>      | Use a manual defrost freezer and avoid repeated freeze thaw cycles. Store at 2 to 8°C for frequent use. Store at -20 to -80°C for twelve months from the date of receipt.   |

---

**Recombinant Proteins & Antibodies****Reconstitution**

Reconstitute in sterile water for a stock solution. A copy of datasheet will be provided with the products, please refer to it for details.

**Species**

Homo sapiens (Human)

**Shipping**

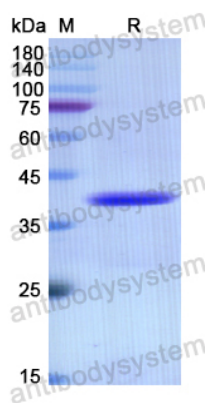
In general, proteins are provided as lyophilized powder/frozen liquid. They are shipped out with dry ice/blue ice unless customers require otherwise.

**Note**

For research use only.

## Data Image

---



SDS-PAGE

SDS PAGE for recombinant Human CD172a/SIRPA protein