

# Recombinant Human CD158a/KIR2DL1 Protein, C-His

## Summary

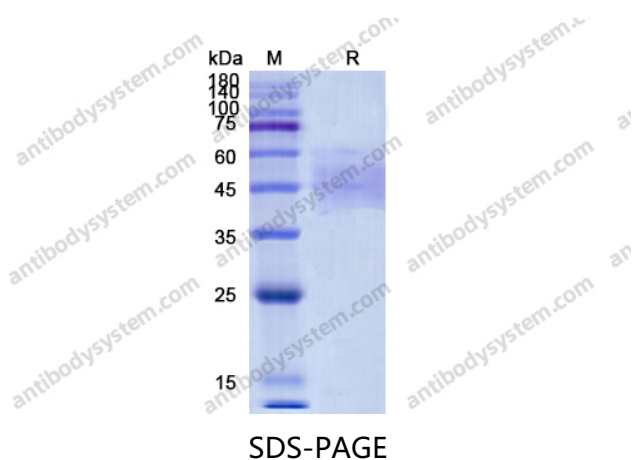
---

<b>Catalog No.</b>	EHE43401
<b>Alternative Names</b>	CD158 antigen-like family member A, KIR2DL1, Killer cell immunoglobulin-like receptor 2DL1, Natural killer-associated transcript 1, NKAT-1, MHC class I NK cell receptor, CD158A, p58 natural killer cell receptor clones CL-42/47.11, CD158a, p58.1 MHC class-I-specific NK receptor, NKAT1, p58 NK receptor CL-42/47.11
<b>Form</b>	Lyophilized
<b>Storage buffer</b>	Lyophilized from a solution in PBS pH 7.4, 1mM EDTA, 4% Trehalose, 1% Mannitol.
<b>Purity</b>	>90% as determined by SDS-PAGE.
<b>Applications</b>	ELISA, Immunogen, SDS-PAGE, WB, Bioactivity testing in progress
<b>Endotoxin level</b>	Please contact with the lab for this information.
<b>Expression system</b>	Mammalian Cells
<b>Accession</b>	P43626
<b>Protein length</b>	Met1-His245
<b>Nature</b>	Recombinant
<b>Predicted molecular weight</b>	28.03 kDa
<b>Stability and Storage</b>	Use a manual defrost freezer and avoid repeated freeze thaw cycles. Store at 2 to 8°C for frequent use. Store at -20 to -80°C for twelve months from the date of receipt.

## Recombinant Proteins &amp; Antibodies

<b>Reconstitution</b>	Reconstitute in sterile water for a stock solution. A copy of datasheet will be provided with the products, please refer to it for details.
<b>Species</b>	Homo sapiens (Human)
<b>Shipping</b>	In general, proteins are provided as lyophilized powder/frozen liquid. They are shipped out with dry ice/blue ice unless customers require otherwise.
<b>Note</b>	For research use only.

## Data Image



SDS PAGE for recombinant Human CD158a / KIR2DL1